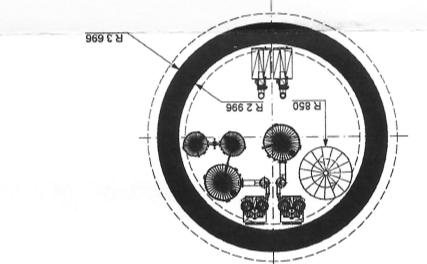
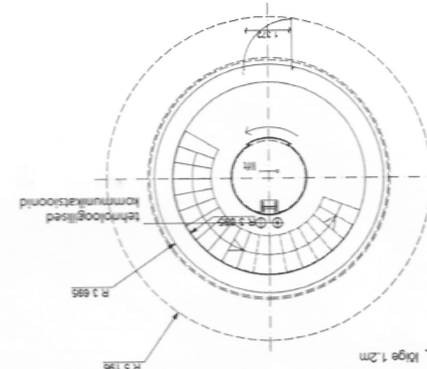
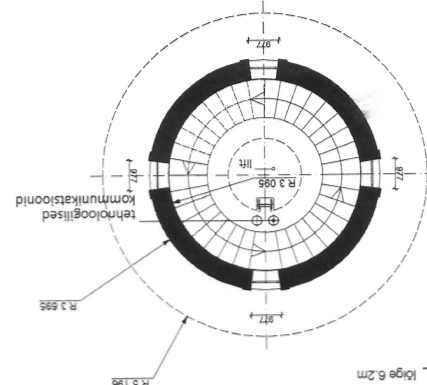
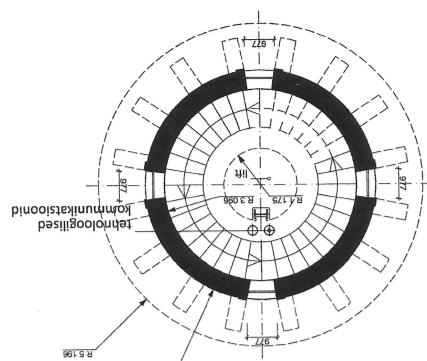
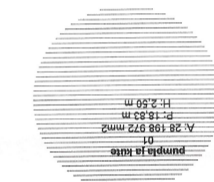
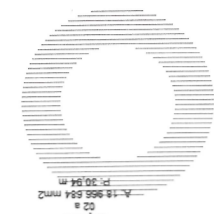
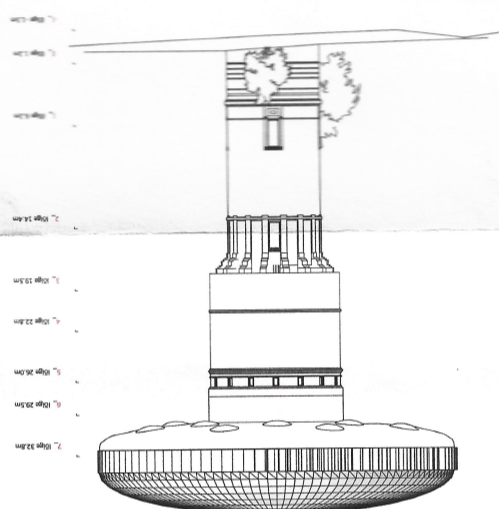
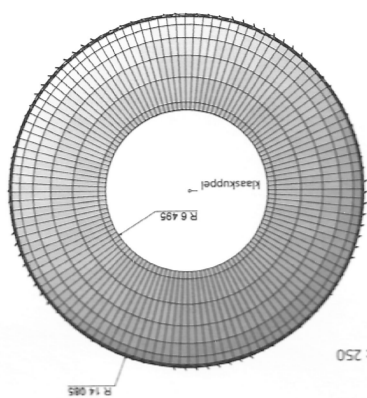
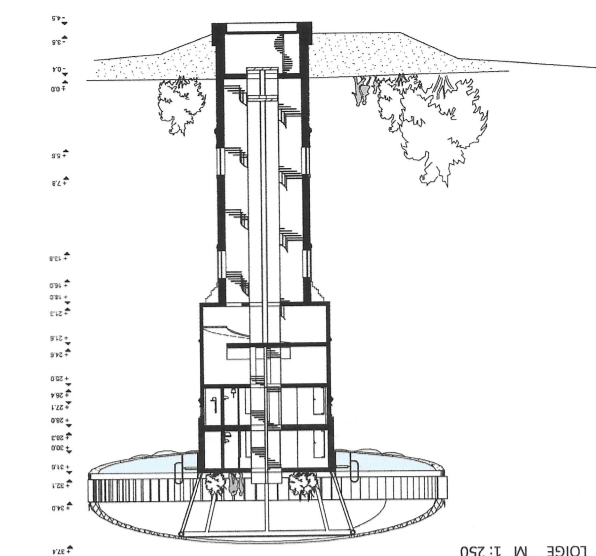
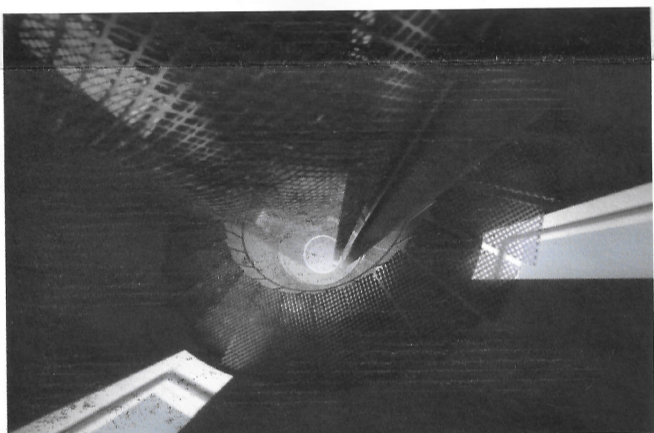
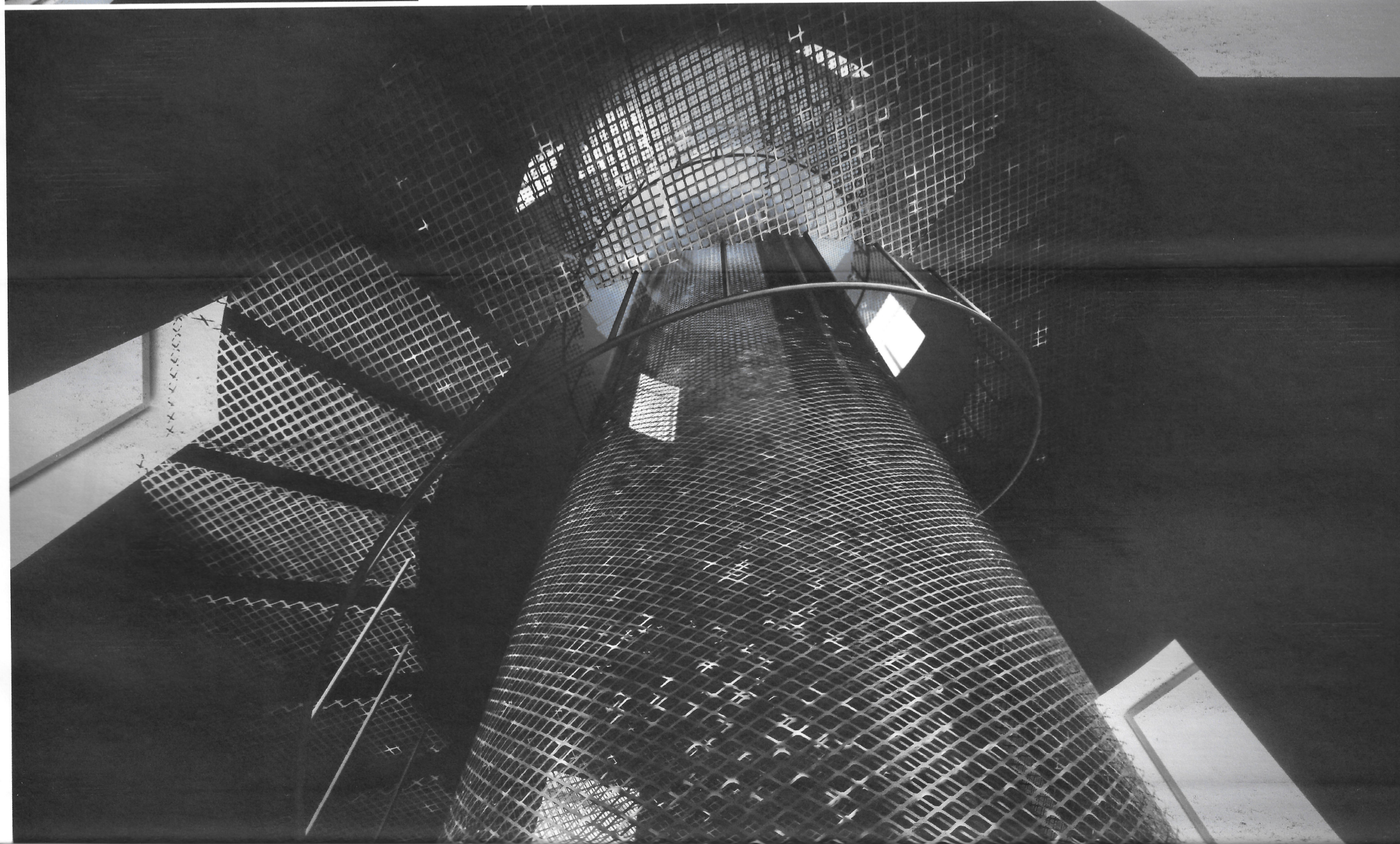
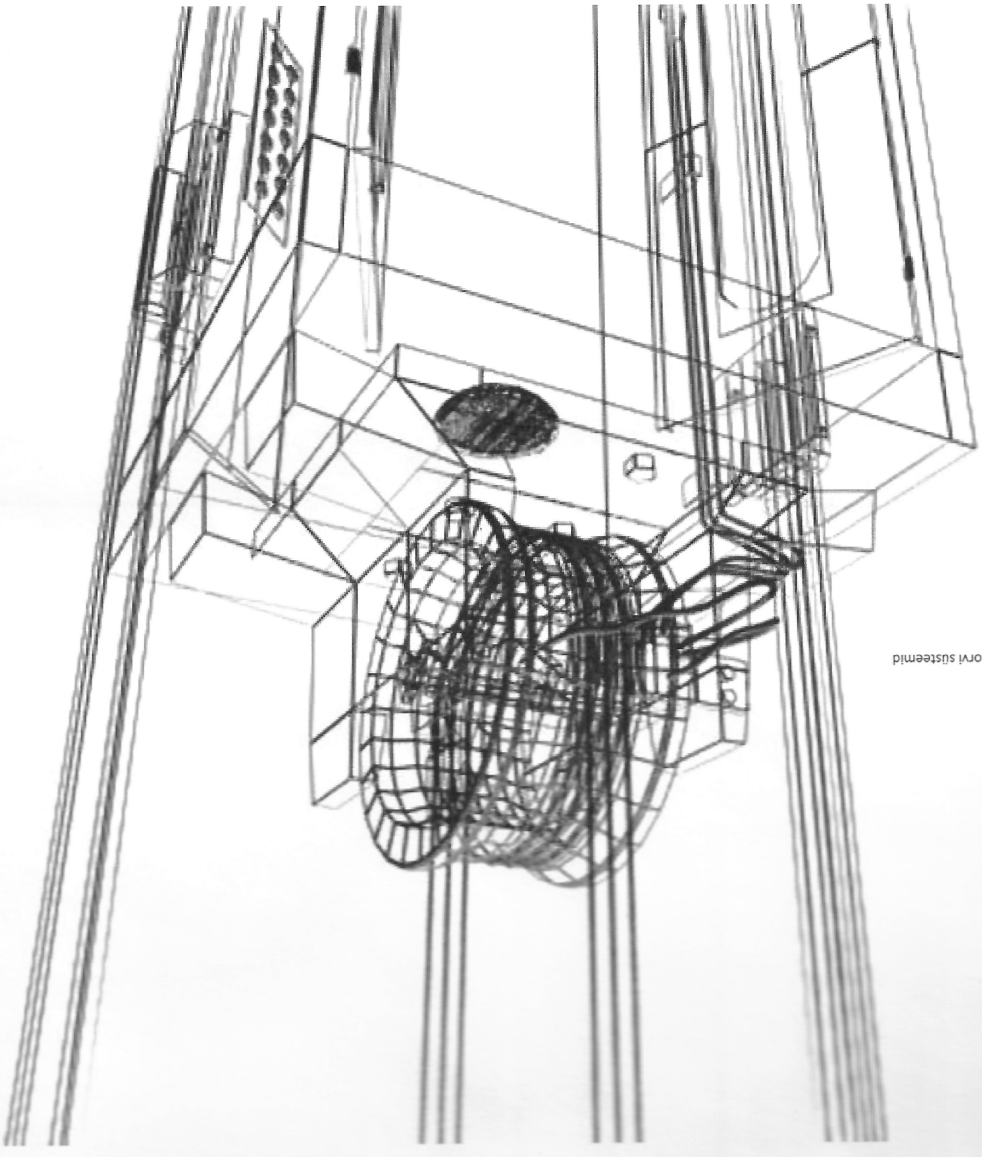


ALTERNATIVED LAHENDUSED

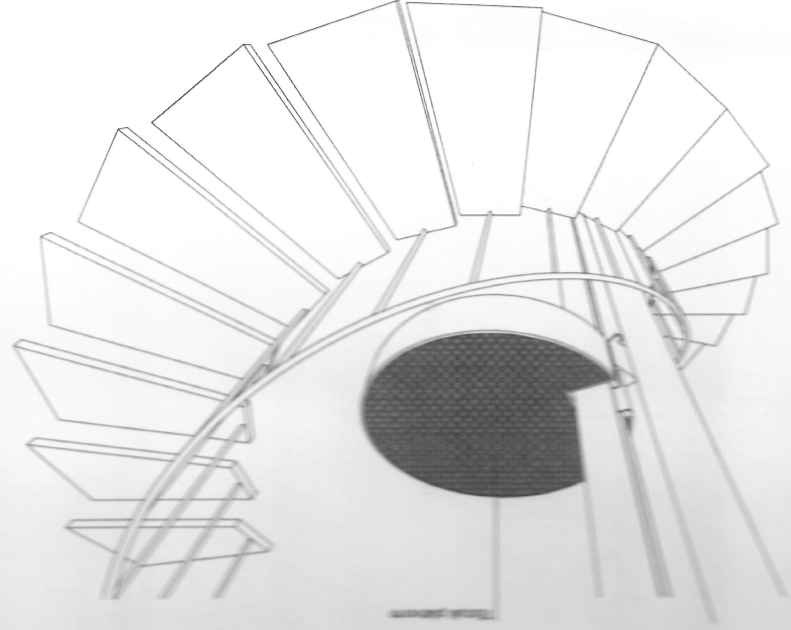
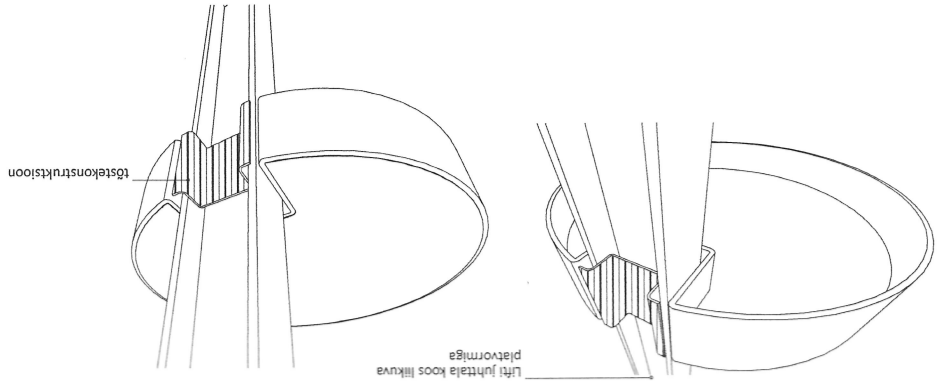


TREPISTIK
PÕHIPLAAN M 1: 100

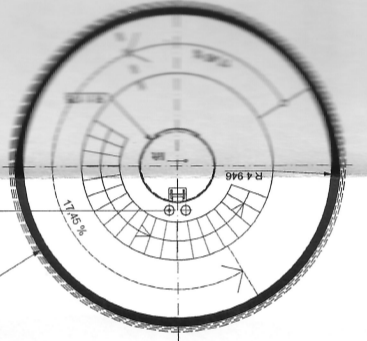




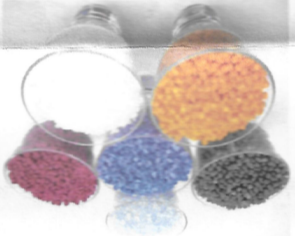
Võimalikud tõstekorvi süsteemid



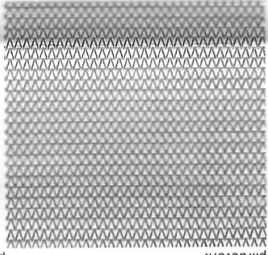
tehnoloogilised kommunikatsioonid



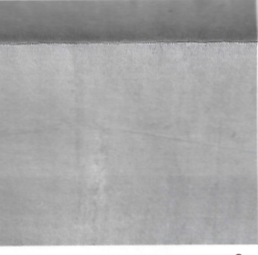
4. liige 22.8m



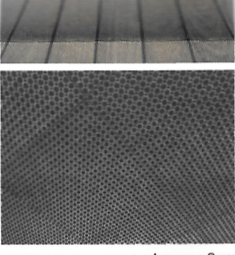
plastigreanulid



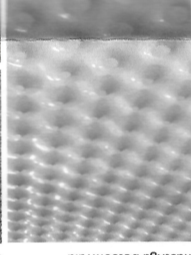
plirdevrk



valge monoliitbetoon



tšingitud respstrand

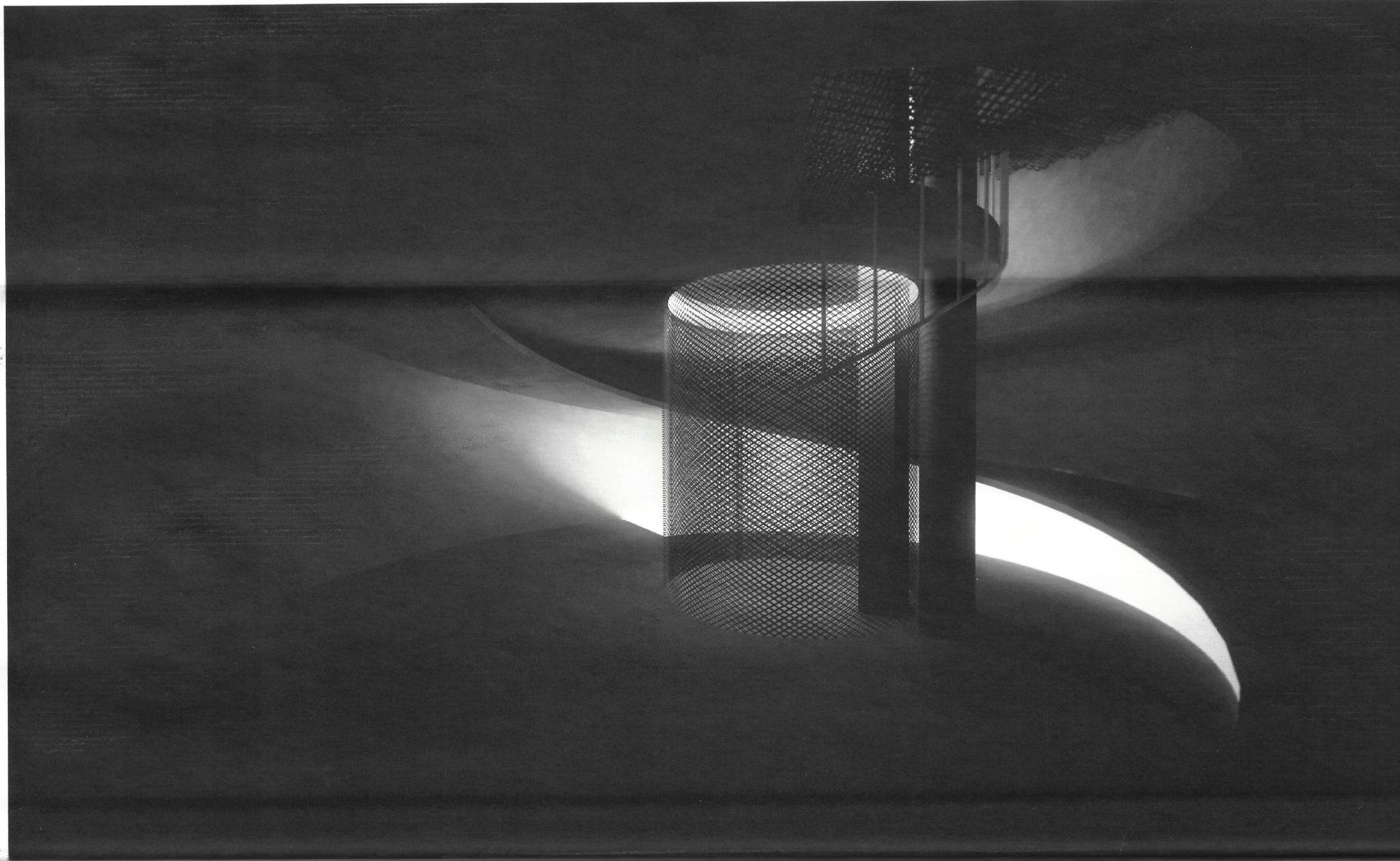


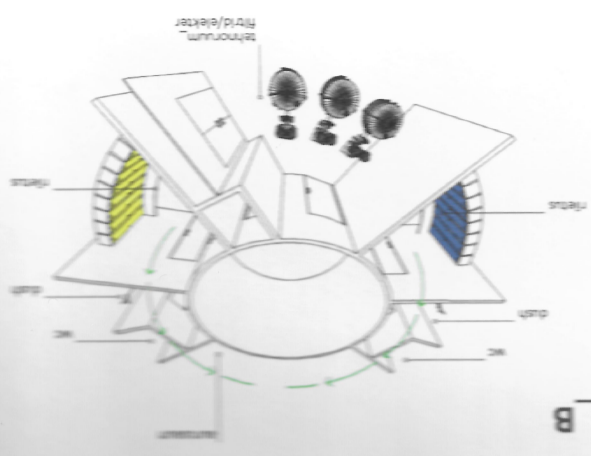
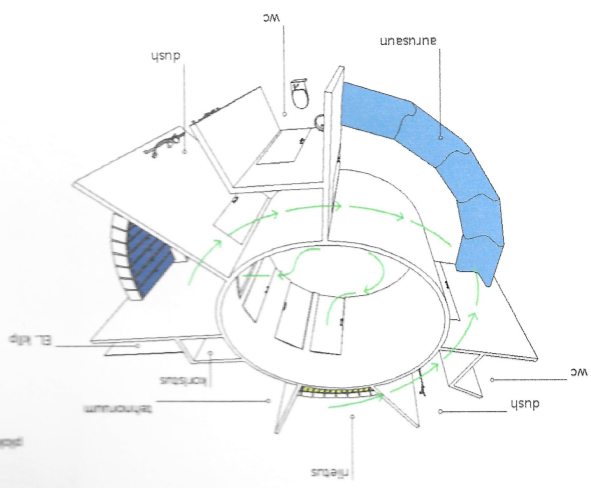
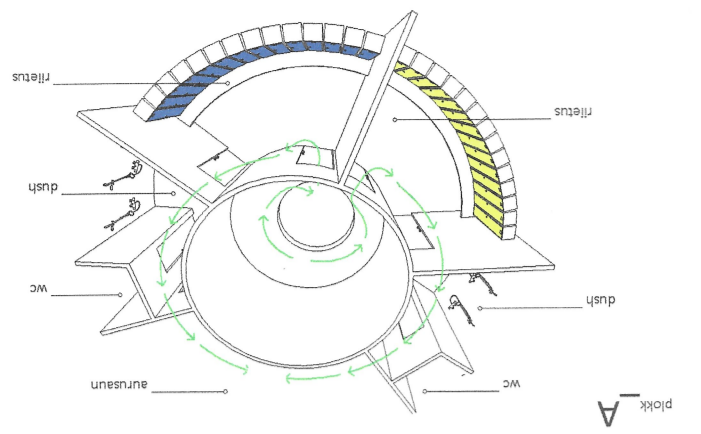
mustiga betoonivalu

MATERJALIVALIK:

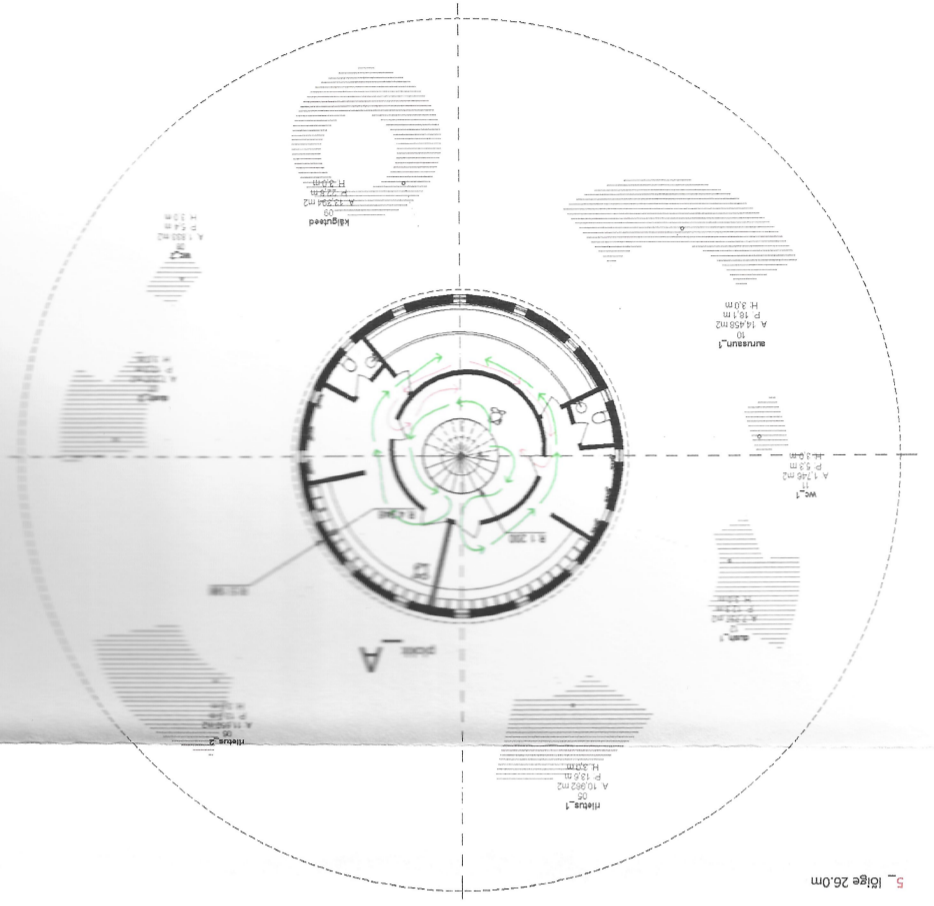
PÕHIPILAN M 1:100

LIFTI LÕPPPEATUS/ PÄÄS ÜLEMISTELE TASANDITELE





SAUNAPLOKKIDE PERSPEKTIIVVAATED JA LIKUMISSKEEM



5. liige 26,0m

6. liige 29,5m

PÕHILIAAN M 1:100
RIIETUSRUMMID JA SAUNAD

SAUNA- JA RIIETUSRUMMID PAIKNEVAD KAHEL ÜLEMISEL KORRUSEL JA MAHUTAVAD KOKKU CA. 50 INIMEST

