

spa

dressing rooms

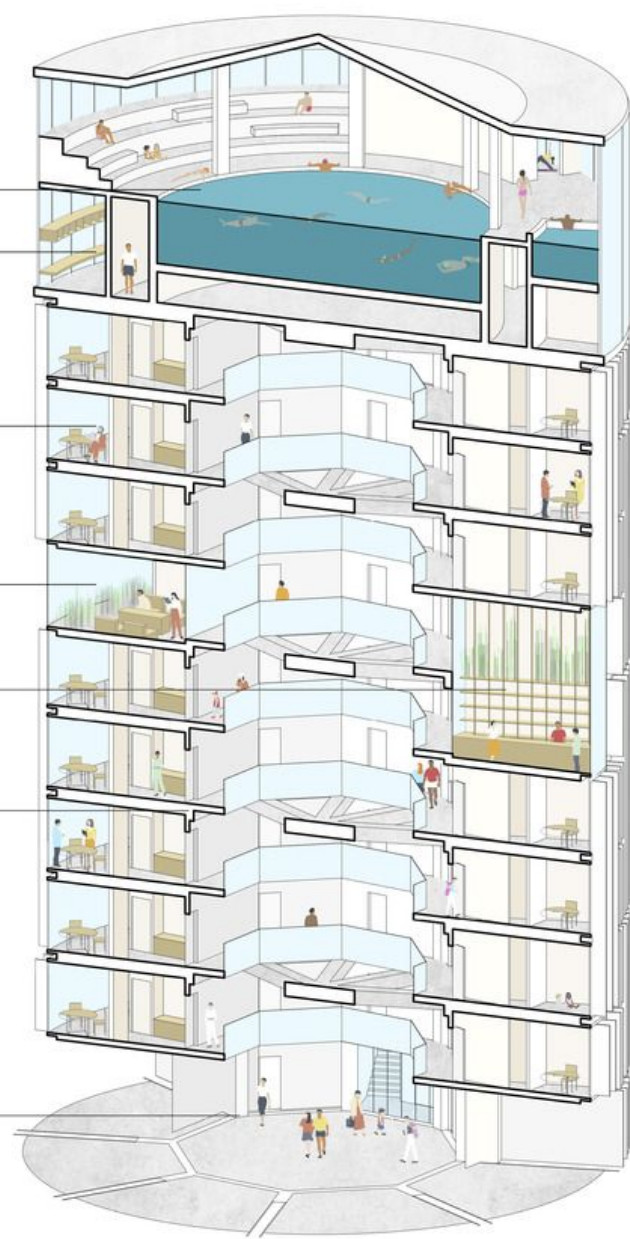
student apartments

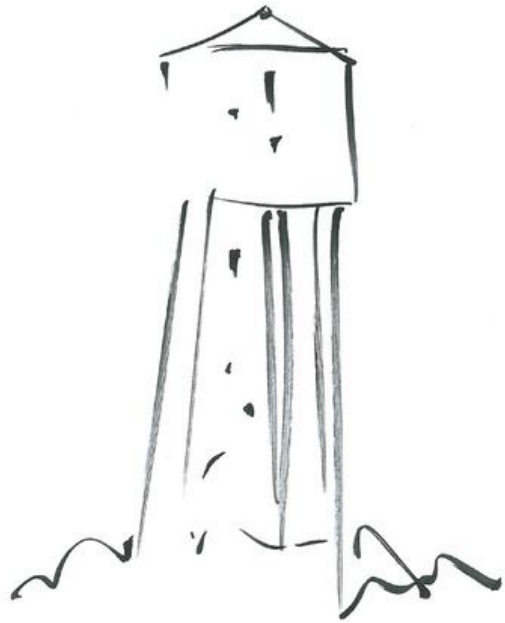
tv room

common kitchen & dining

access corridor

entrance





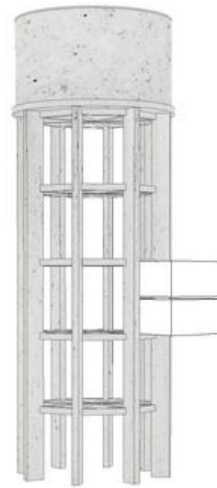
FROM AN OBSOLETE
STRUCTURE...



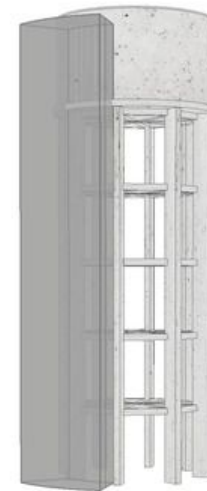
...TO AN ATTRACTIVE LIVELY ICON
FOR LOCAL AND INTERNATIONAL
USERS



The water tower is essentially a very robust reinforced concrete structure...



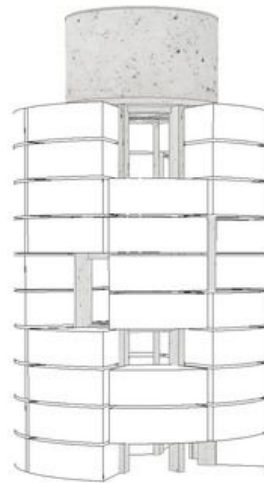
...in fact so rigid, that one could suspend small living units from it.



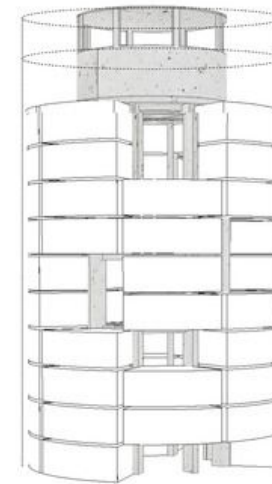
As the middle space is occupied by bracing beams, the vertical circulation would be addressed at the perimeter.



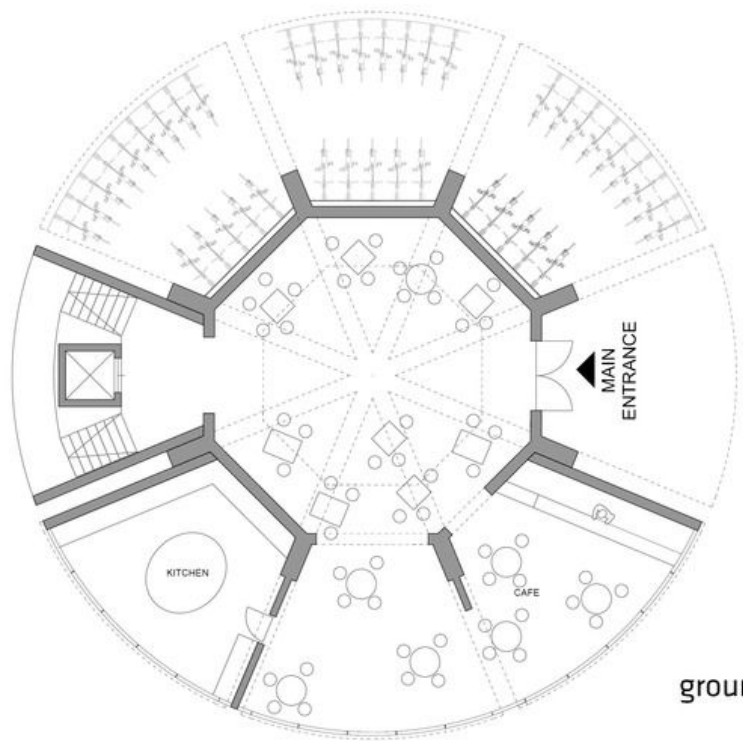
A maximum of 56 units is possible...



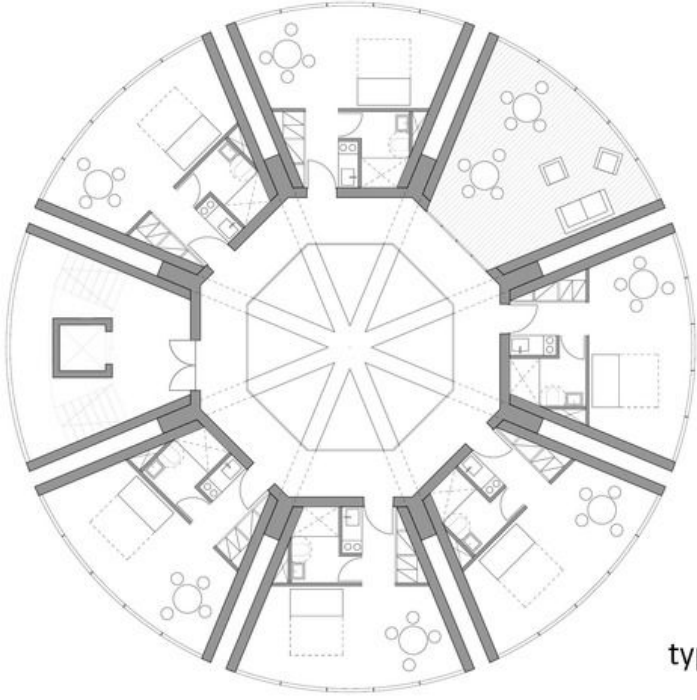
...but by strategically omitting some, we can create shared double height spaces (kitchen, dining, tv room etc)



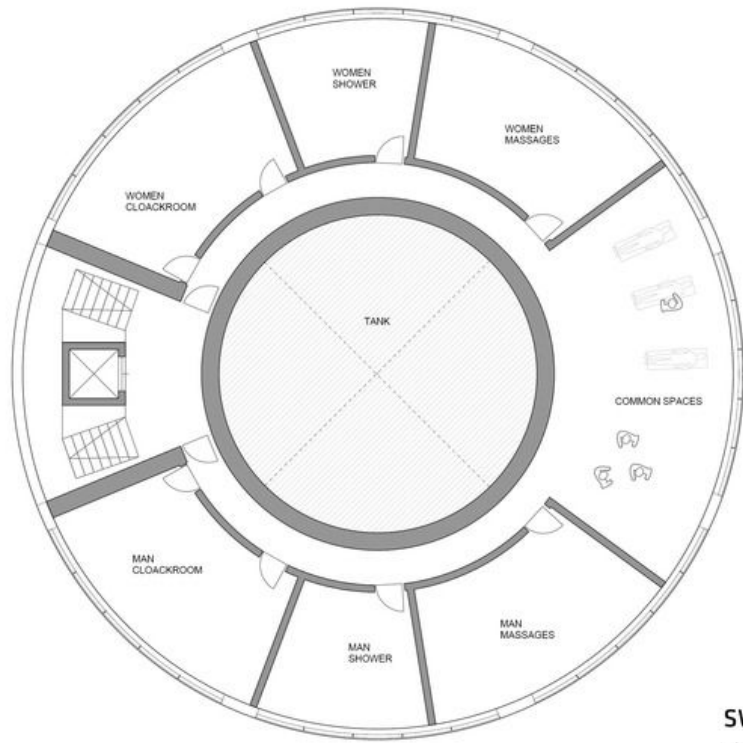
We transform the top tank to a two floor spa, where the lower part is the actual swimming tank and dressing rooms, and the upper is the swimming / viewing deck.



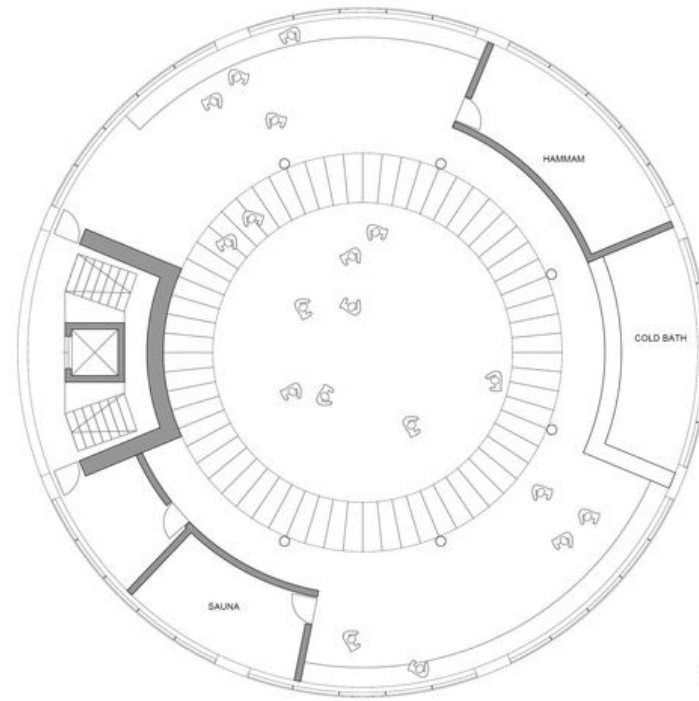
ground floor



typical floor



swimming tank & dressing rooms



top floor spa