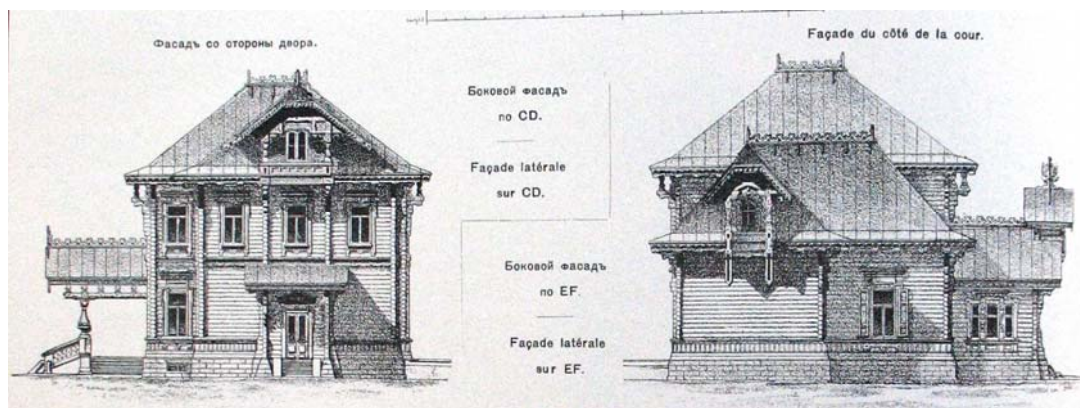
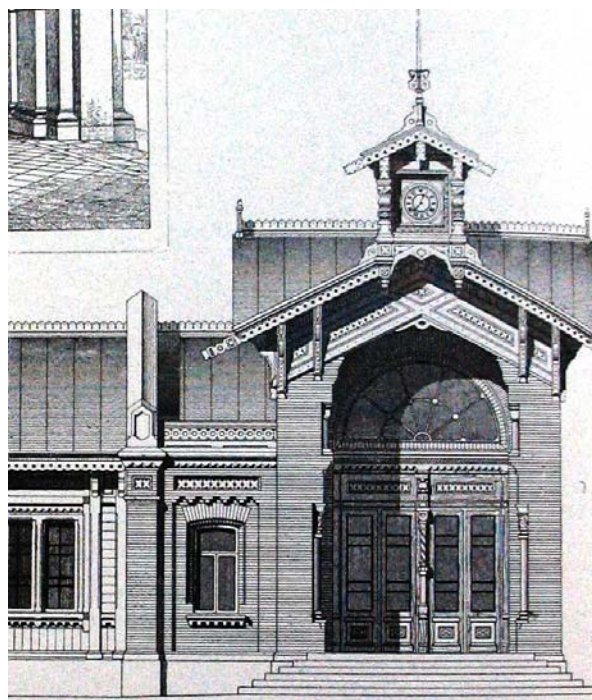


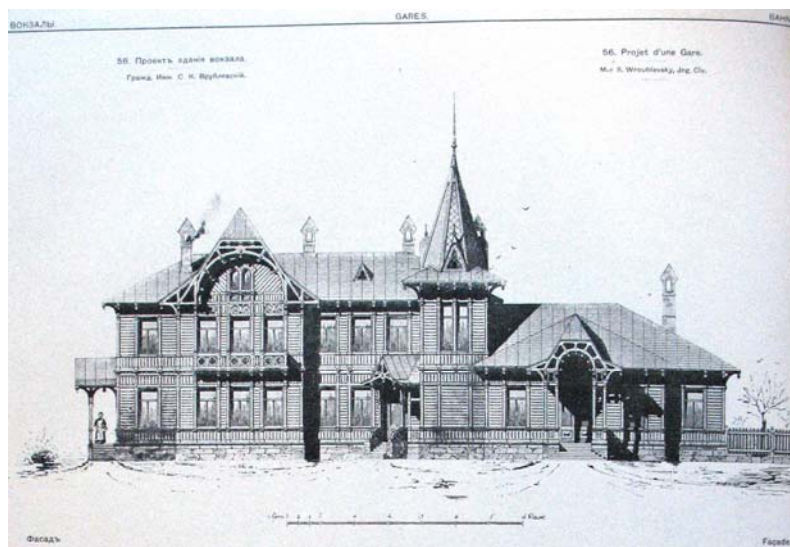
Lisa 1.7 G. V. Varanovskii (Г. В. Барановский), „Архитектурная энциклопедия второй половины XIX века” , 1902-1908, St. Peterburg

1.) Raudteejaam, arh. C. Rachau (album II, 1908.a. lk. 66)

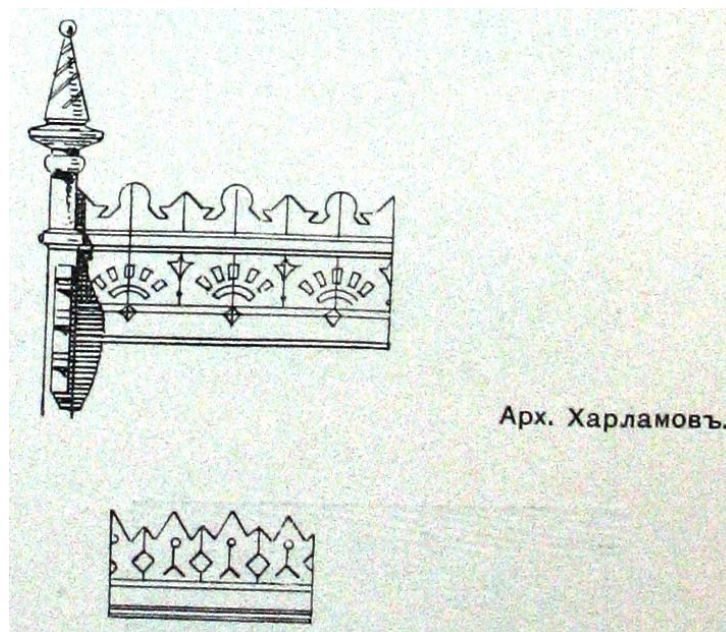


2.) Gatšina vana jaamahoone Balti raudteel, arh. P. S. Kupinskii (album II, 1908.a. lk. 68)

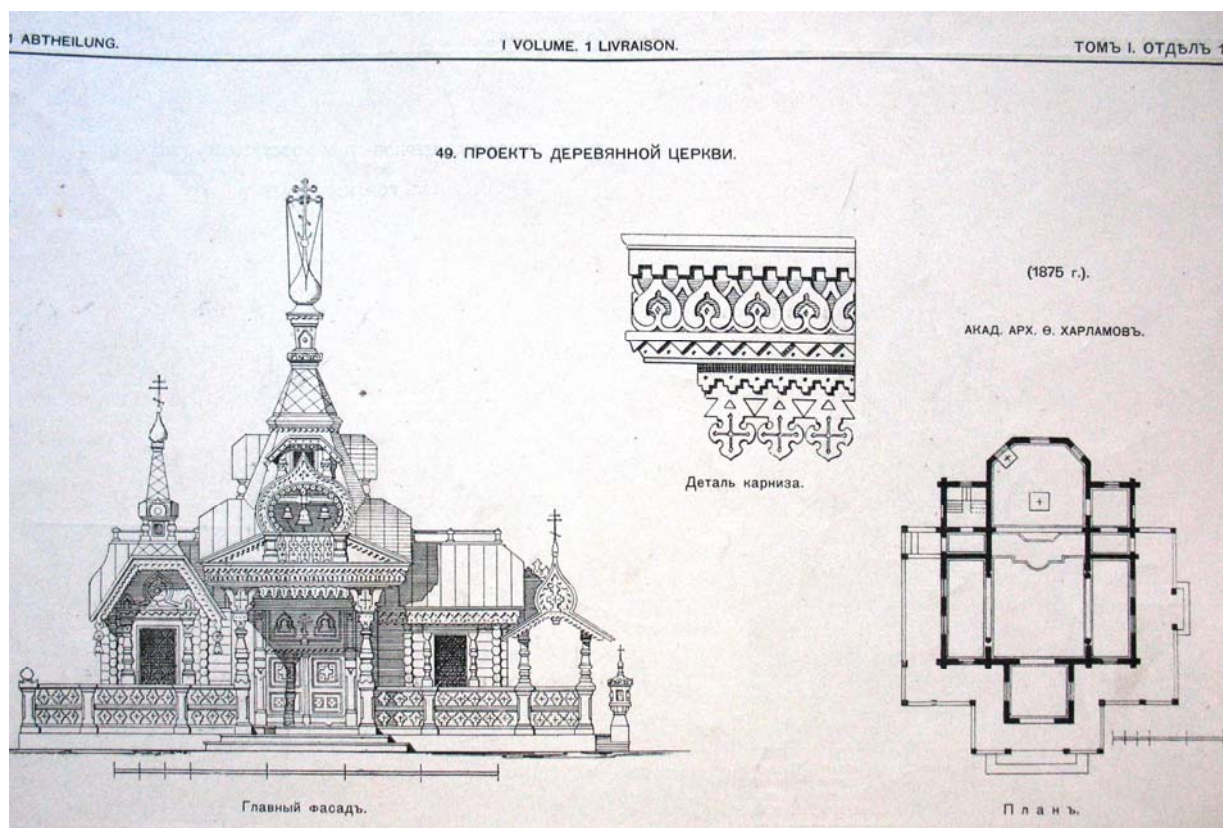
3.) Jaamahoone projekt, arh. S. K. Vrublevskii (album II, 1908.a. lk. 116)



Lisa 1.7 G. V. Varanovskii (Г. В. Барановский), „Архитектурная энциклопедия второй половины XIX века”, 1902-1908, St. Peterburg

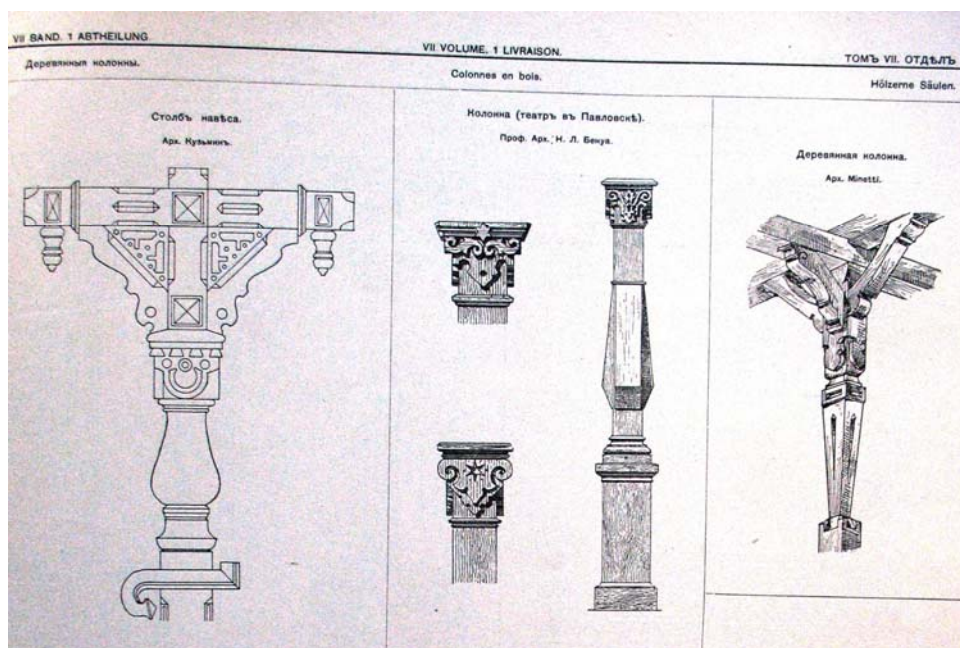


4.) Saelõikelised kaunistused (katuse harjale), arh. E. Harlamov (album VII, 1904. a., lk. 87.)

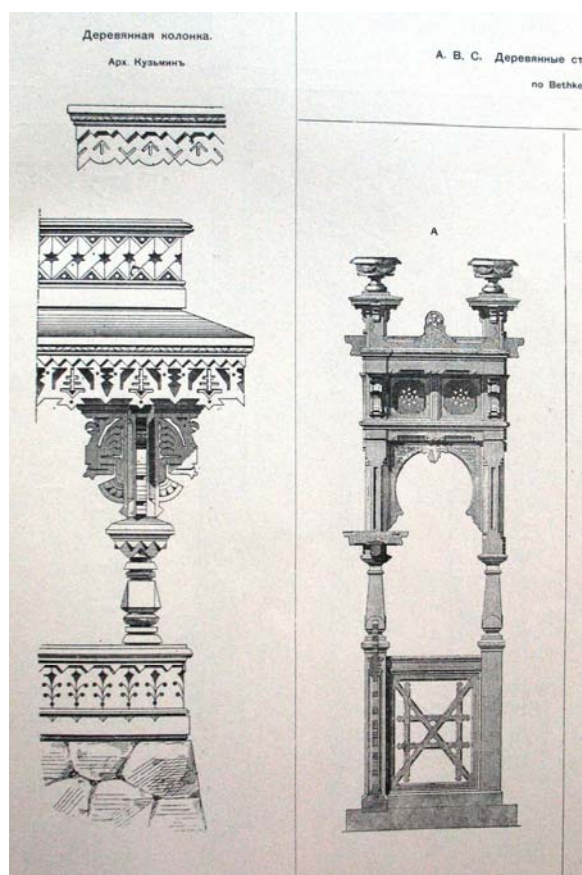


5.) Puitkiriku projekt 1875.a., akad. arh. E. Harlamov (album I, 1902. a., lk. 49)

Lisa 1.7 G. V. Varanovskii (Г. В. Барановский), „Архитектурная энциклопедия второй половины XIX века”, 1902-1908, St. Peterburg

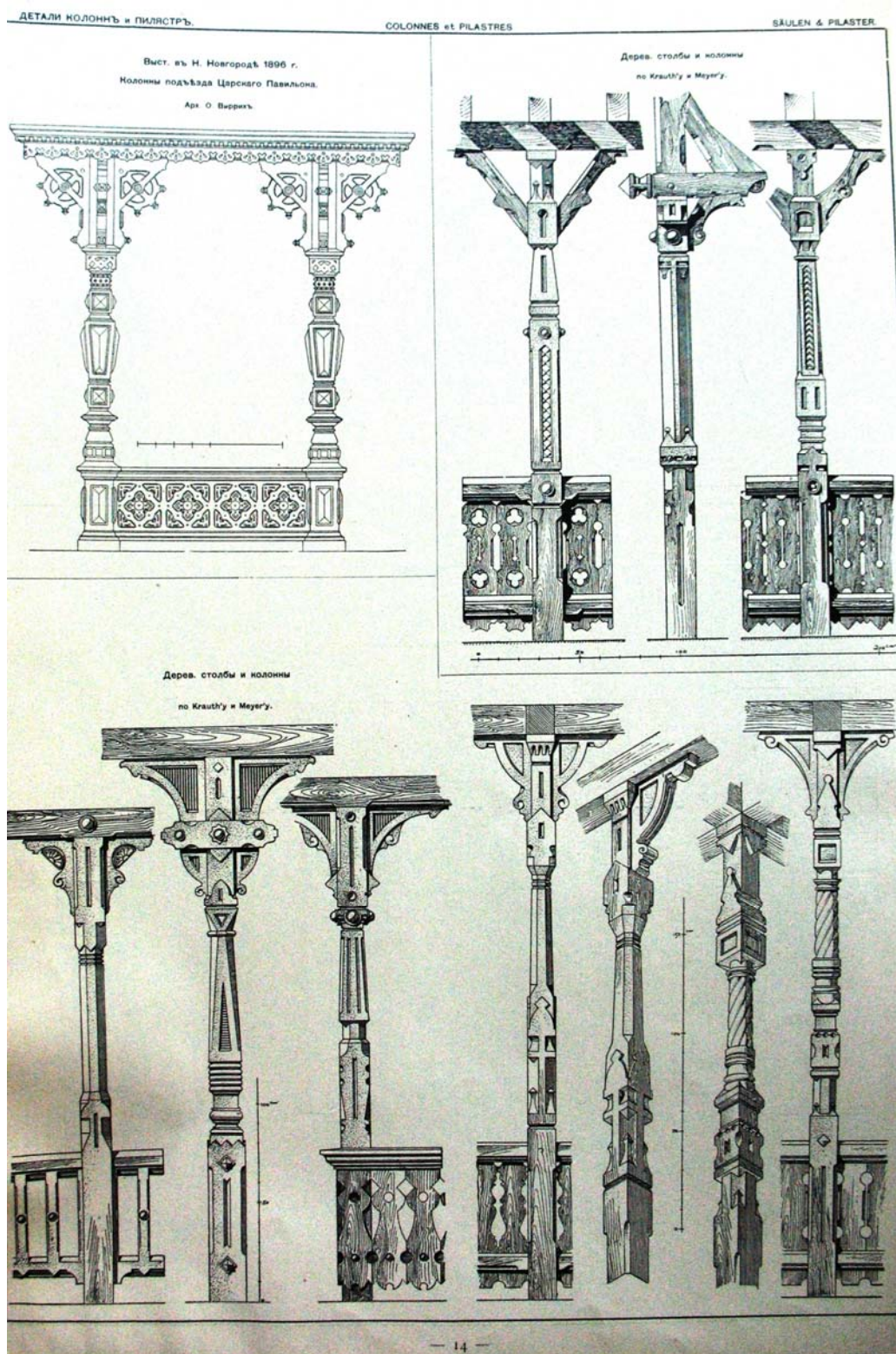


6.) Puitsammaste lahendus (vasakult paremale): arh. Kuzmin, prof. arh. N. L. Benua (teater Pavlovskis), arh. Minetti. (album VII, 1904.a. lk. 13)



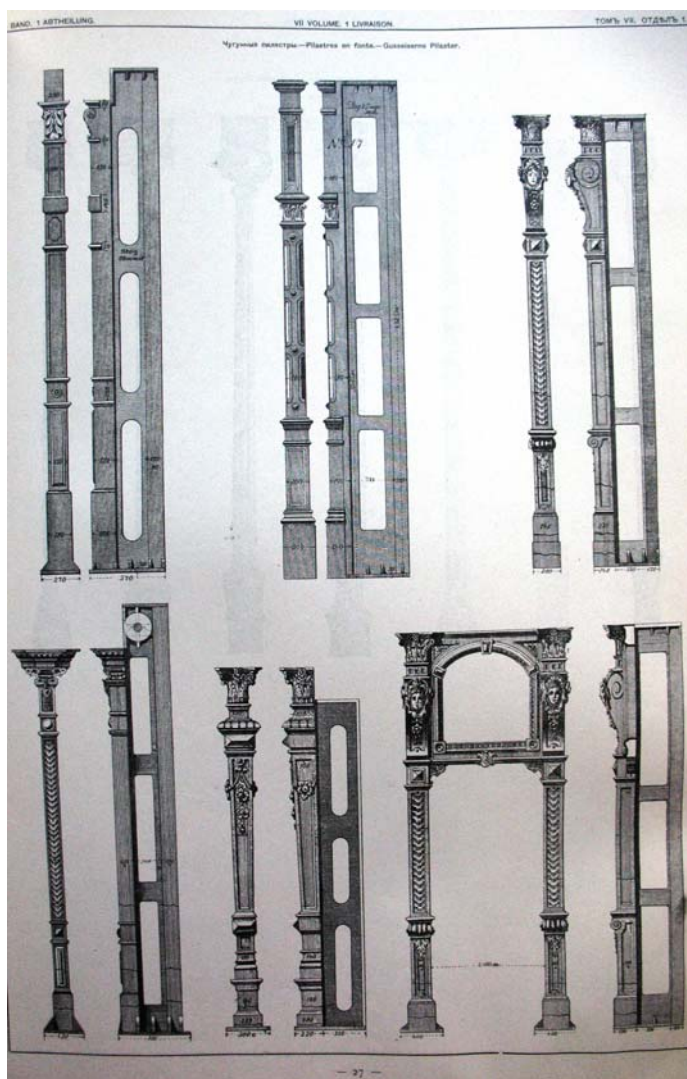
7.) Puitdetailid (vasakul) arh. Kuzmin, (paremal) Bethke (album VII, 1904. a. lk. 13)

Lisa 1.7 G. V. Varanovskii (Г. В. Барановский), „Архитектурная энциклопедия второй половины XIX века”, 1902-1908, St. Peterburg

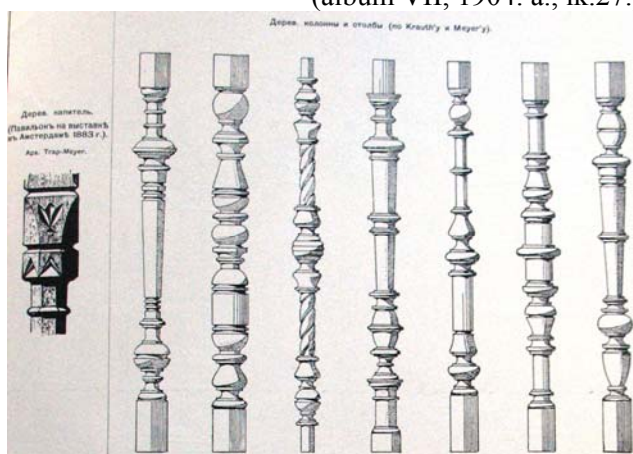


8.) Puitsambad, (vasakul üleval) arh. O. Virrich, 1896.a.; (ülal paremal ja all) Krauth & Meyer'i eeskujud. (albumVII, 1904.a. lk.14)

Lisa 1.7 G. V. Baranovskii (Г. В. Барановский), „Архитектурная энциклопедия второй половины XIX века”, 1902-1908, St. Peterburg



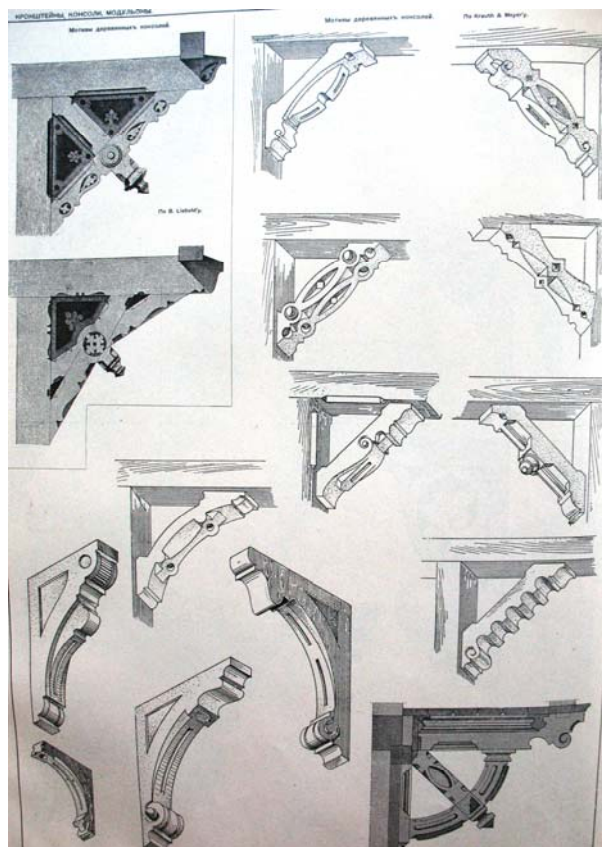
9.) Malmist pilastrid moodsaatele puitsammastele analoogsete kujundusvõtetega (album VII, 1904. a., lk.27.)



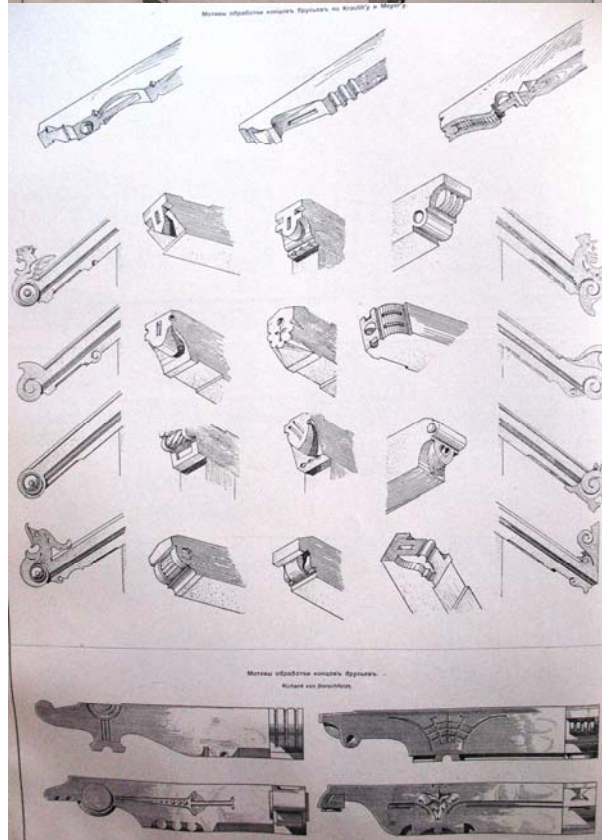
10.) Puidust samba- ja postikeste kujundusi: (vasakul) arh. Trap-Meyer, näitusepaviljonilt Amsterdamis 1883. a. ; (paremal) Krauth & Meyer (album VII, 1904. a., lk. 15)

Lisa 1.7 G. V. Baranovskii (Г. В. Барановский), „Архитектурная энциклопедия второй половины XIX века”, 1902-1908, St. Peterburg

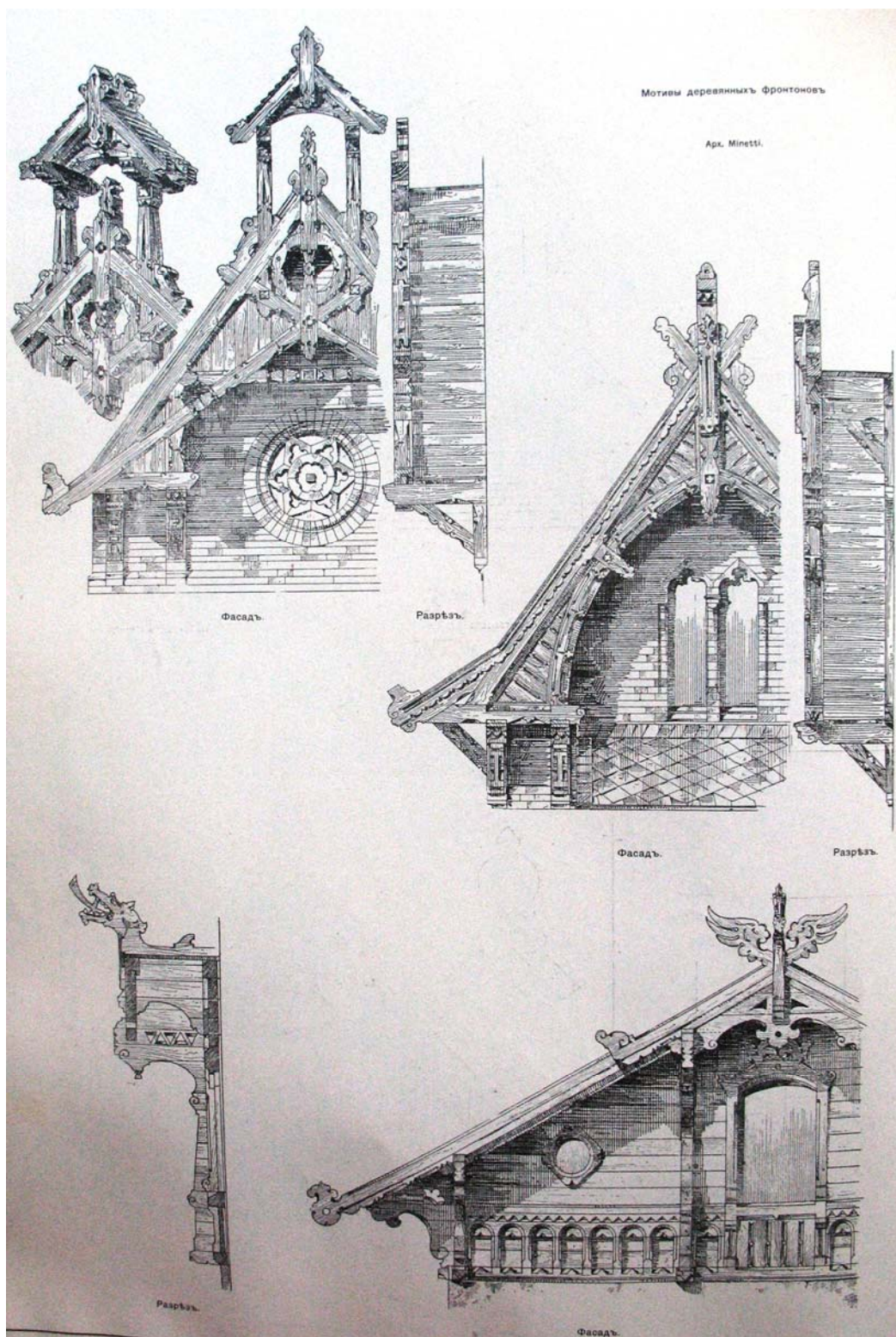
12.) Konsoolid: (vasakul üleval 2 tk) V. Liebold;
Krauth & Meyer (album VII, 1904. a., lk. 54.)



13.) Sarikaotste kaunistused:
(üleval) Krauth & Meyer;
(all) Richard von Dorschfeidt
(album VII, 1904. a., lk.90)

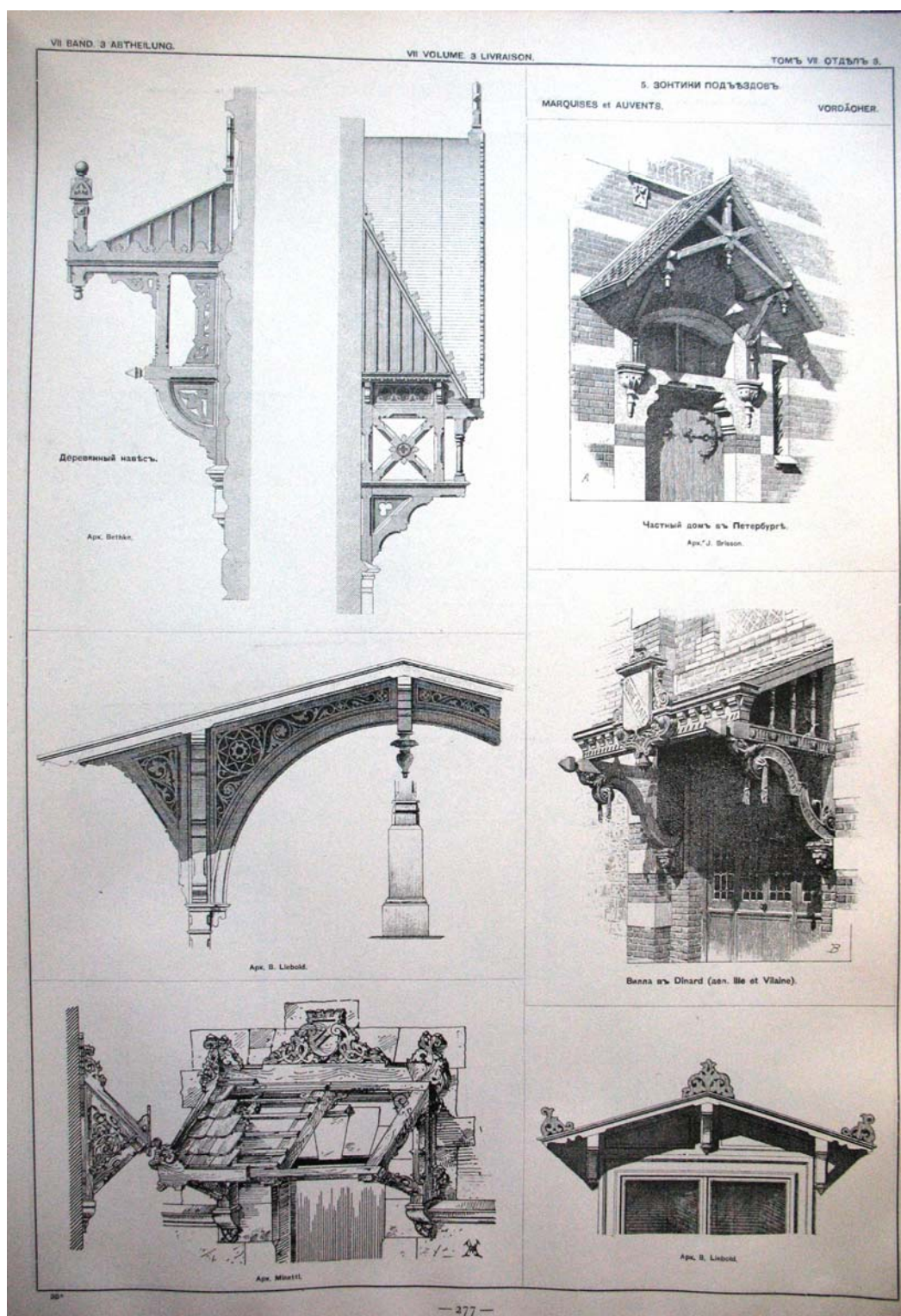


Lisa 1.7 G. V. Baranovskii (Г. В. Барановский), „Архитектурная энциклопедия второй половины XIX века”, 1902-1908, St. Peterburg



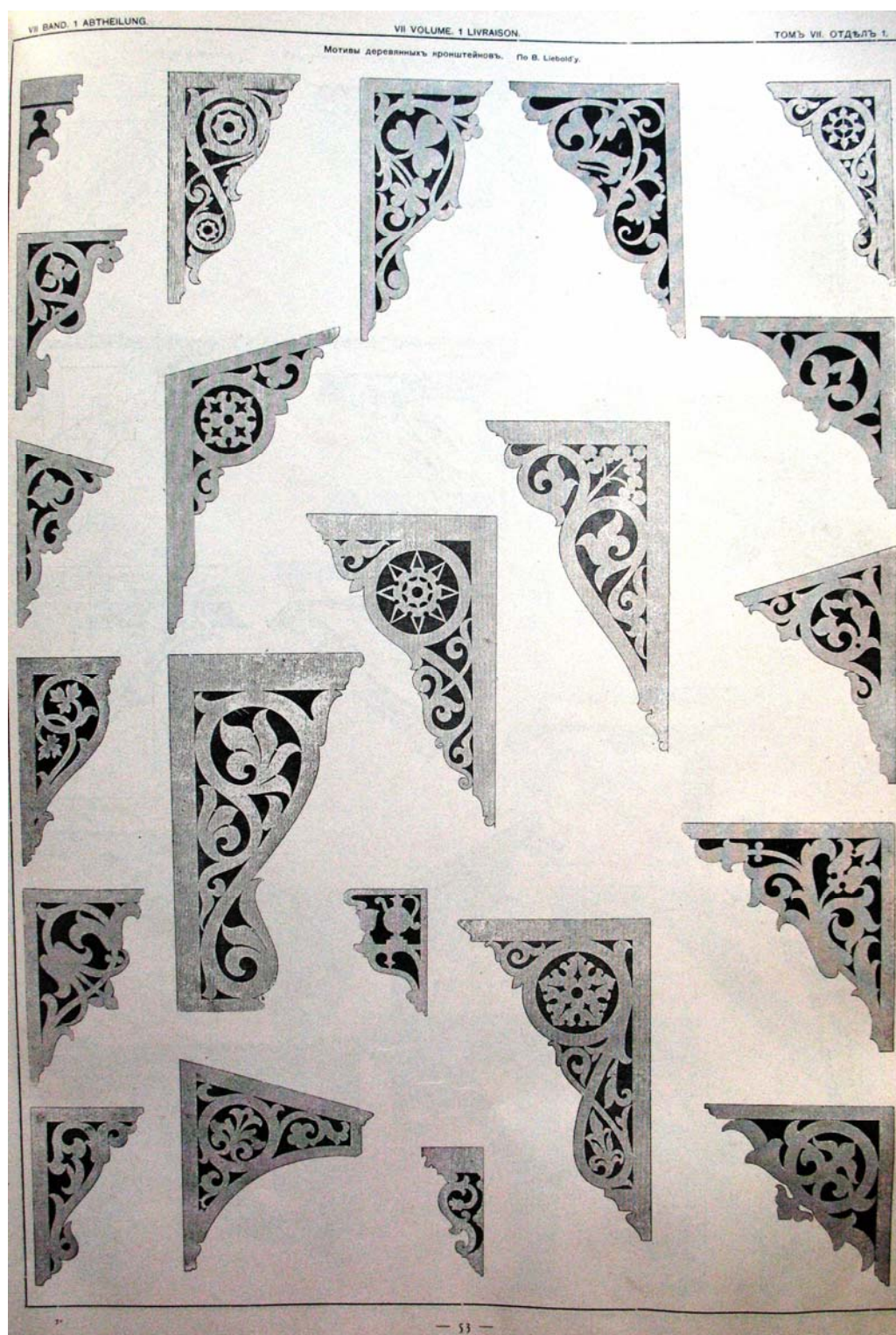
14.) Puidustiilis katuseviilude kujundused. Arh. Minetti järgi (album VII, 1904. a., lk. 110)

Lisa 1.7 G. V. Varanovskii (Г. В. Барановский), „Архитектурная энциклопедия второй половины XIX века”, 1902-1908, St. Peterburg



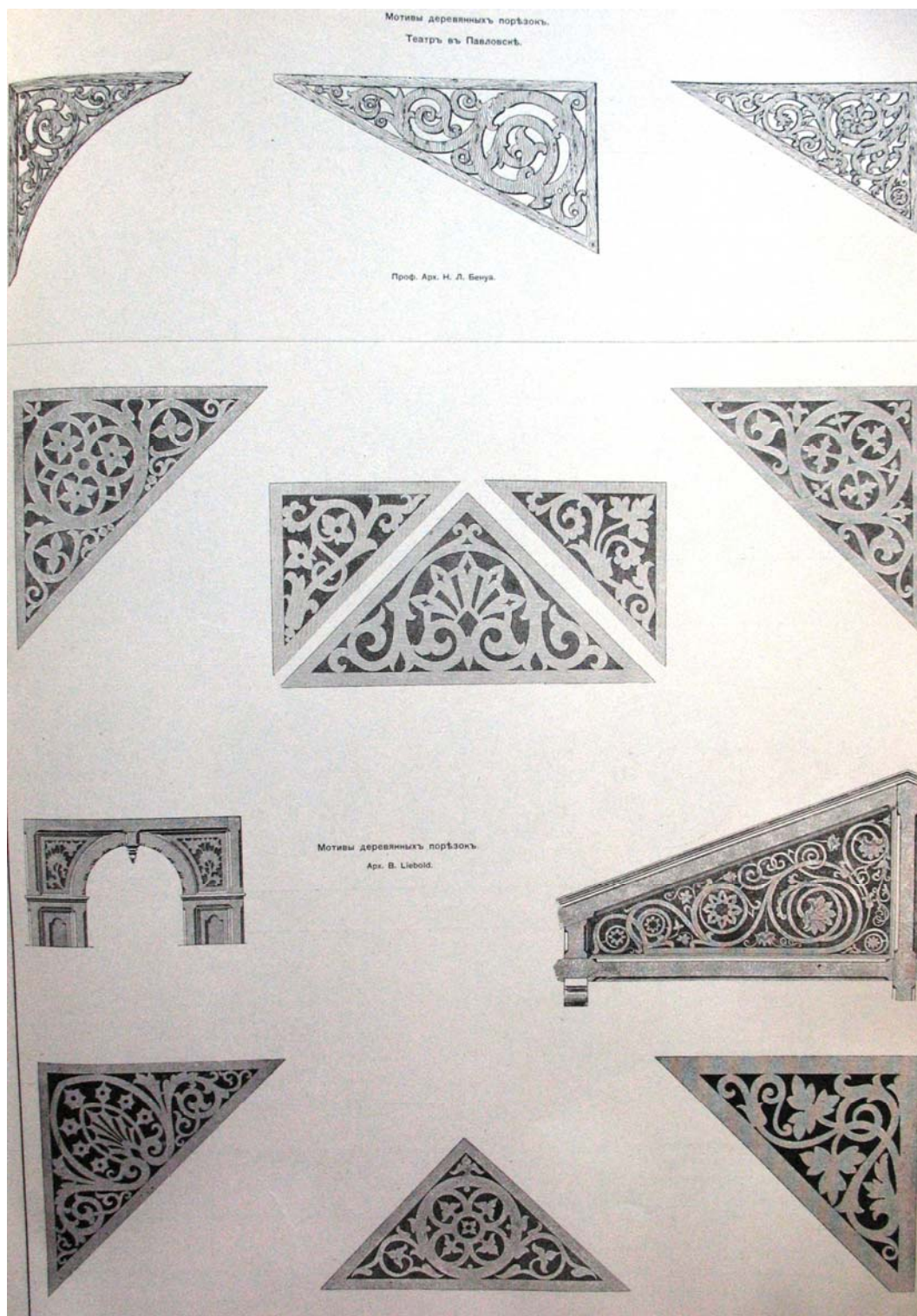
15.) Varikatused ja konsolidid: (üleval vasakul) arh Bethke, (ülaeval paremal) J. Brisson; (keskel vasakul) arh. V. Liebold; (keskel paremal) villa Dinard'is; (all vasakul) arh. Minetti; (all paremal) arh. V. Liebold (album VII, 1904. a., lk. 277)

Lisa 1.7 G. V. Baranovskii (Г. В. Барановский), „Архитектурная энциклопедия второй половины XIX века” , 1902-1908, St. Peterburg



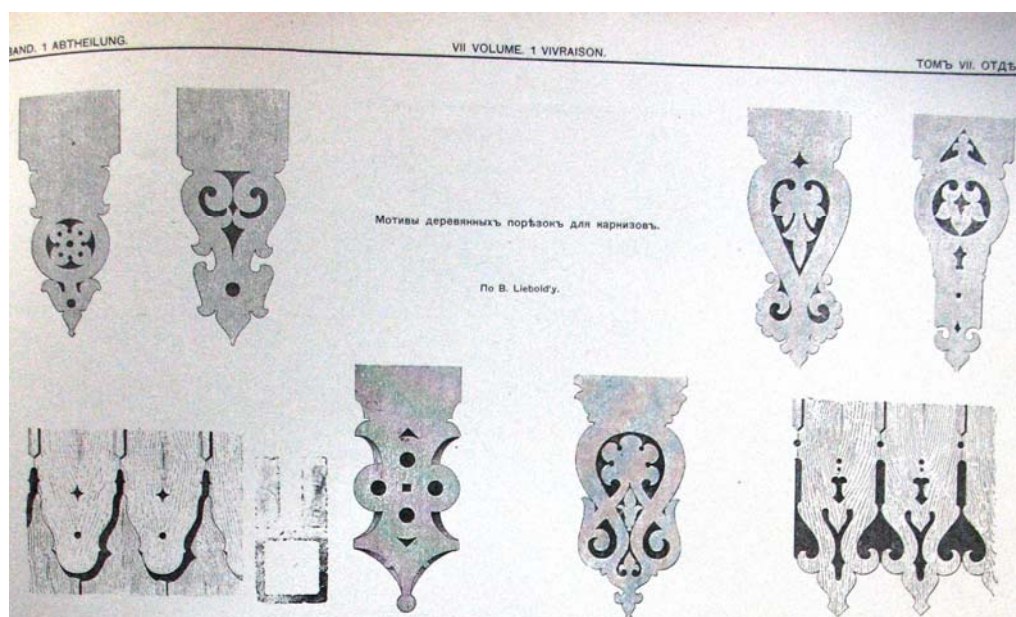
16.) Puitkonsoolid, arh. V. Liebold (album VII, 1904. a., lk.53.)

Lisa 1.7 G. V. Varanovskii (Г. В. Барановский), „Архитектурная энциклопедия второй половины XIX века”, 1902-1908, St. Peterburg

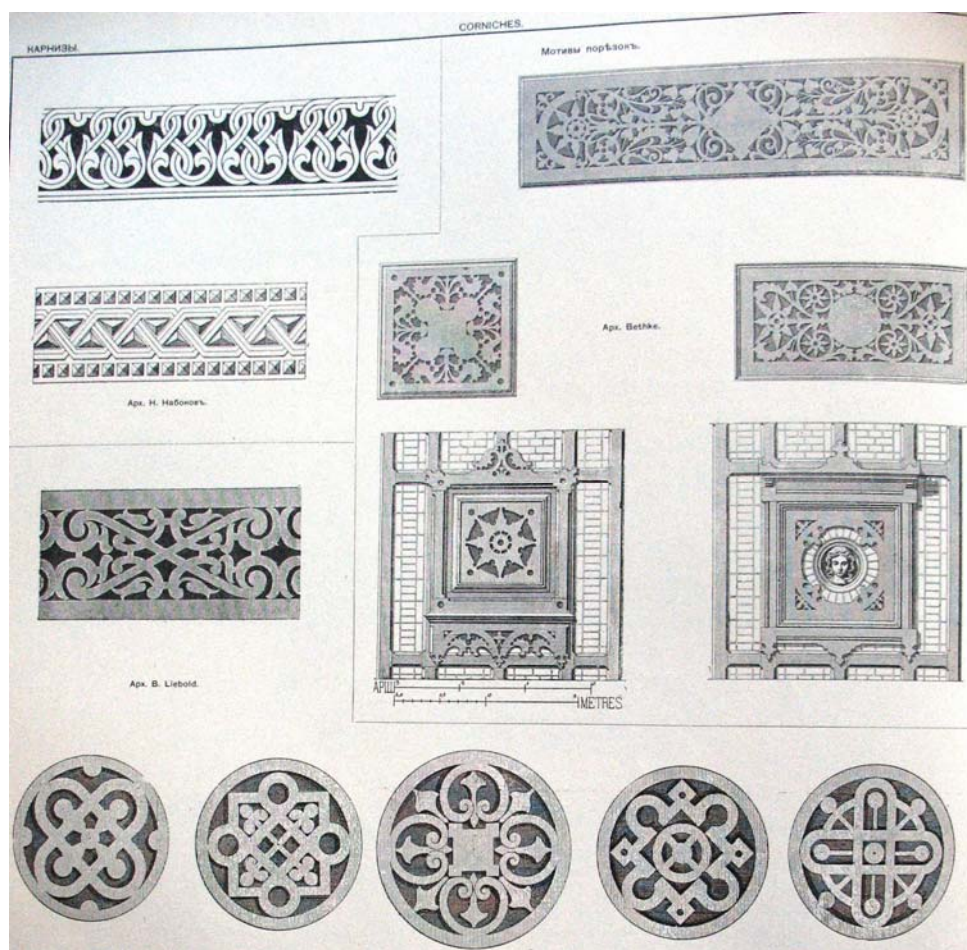


17.) Puitdekoor: (üleva) teater Pavlovskis, prof. arh. N. L. Benua; (keskel ja all) arh. V. Liebold (album VII, 1904. a., lk. 81)

Lisa 1.7 G. V. Varanovskii (Г. В. Барановский), „Архитектурная энциклопедия второй половины XIX века”, 1902-1908, St. Peterburg

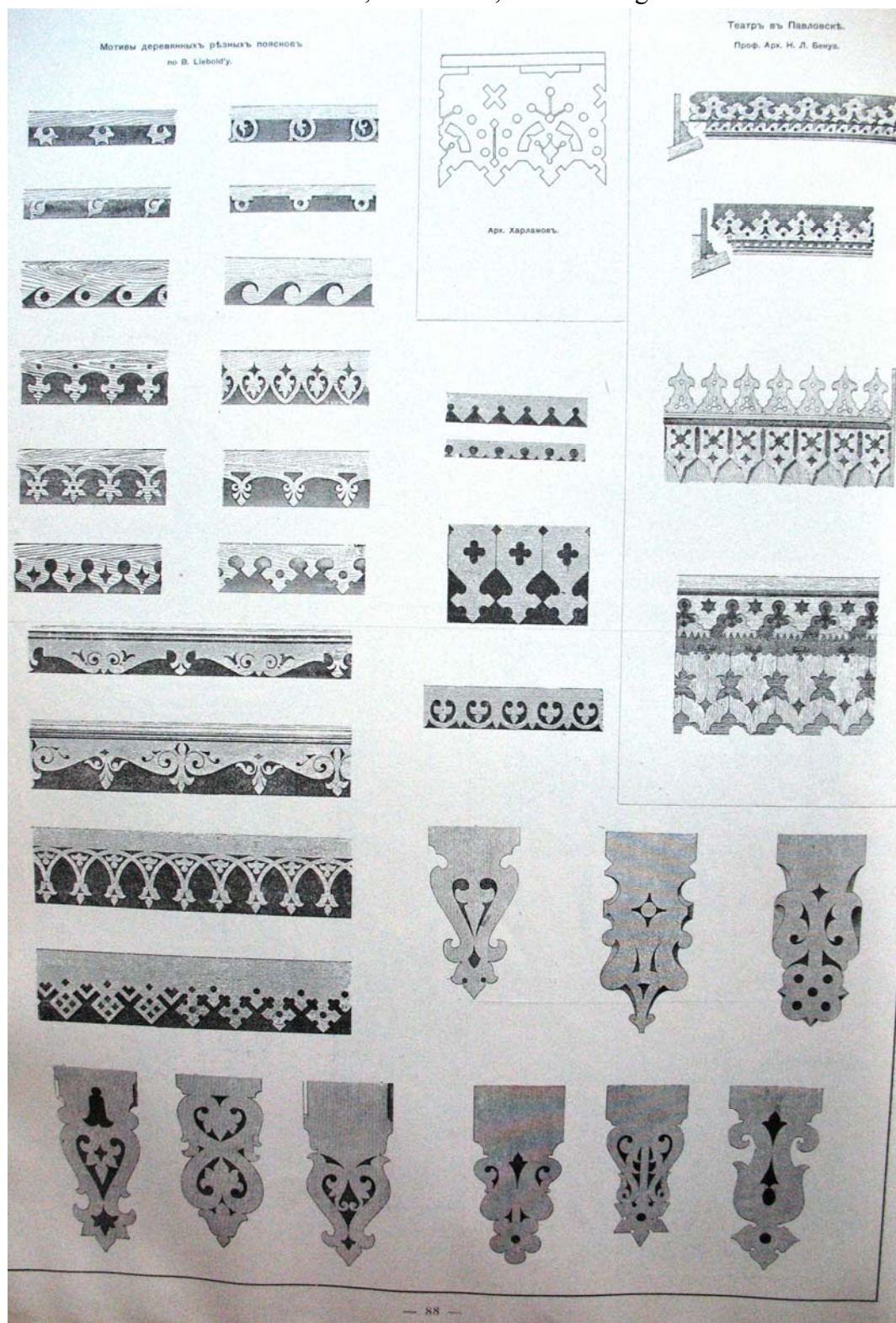


18.) Laudvoodri saelõikelised otsad, arh. V. Liebold'i järgi (album VII, 1904. a., lk. 89)



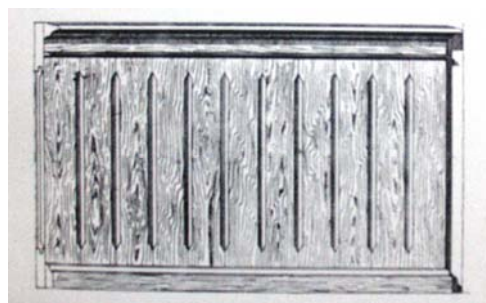
19.) Puitdekoor: (üleval vasakul) arh. N. Nabokov; (üleval paremal) arh. Bethke; (all) arh. V. Liebold (album VII, 1904. a., lk. 82)

Lisa 1.7 G. V. Varanovskii (Г. В. Барановский), „Архитектурная энциклопедия второй половины XIX века”, 1902-1908, St. Peterburg

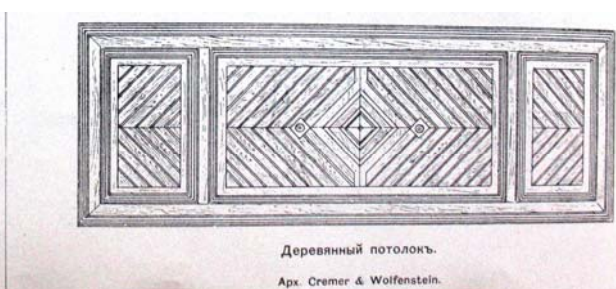


20.) Saelõikelised puitdetailid: (vasakult alla keskele) arh. V. Liebold; (üleval keskel) arh. E. Harlamov; (üleval paremal) arh. N. L. Benua (teater Pavlovskis), (album VII, 1904. a., lk. 88)

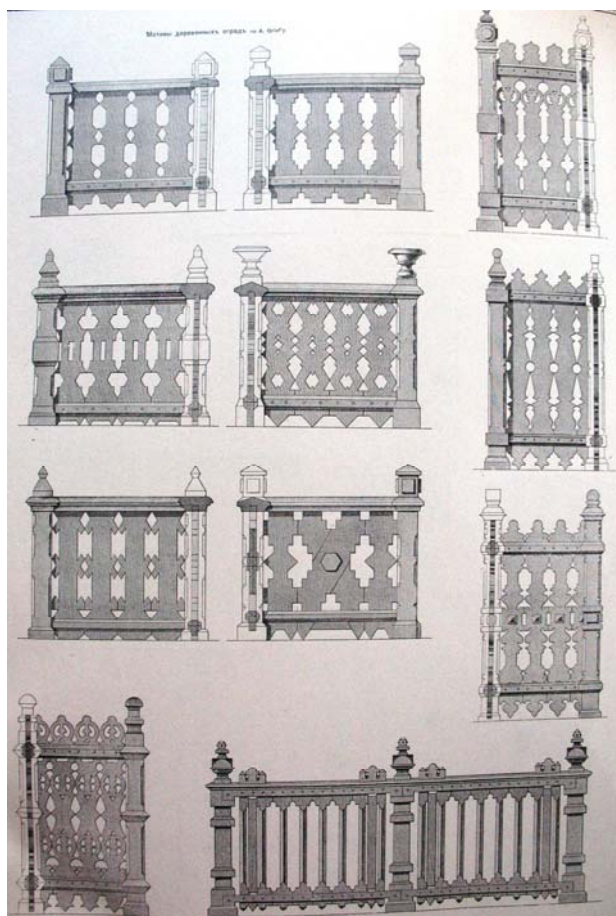
Lisa 1.7 G. V. Varanovskii (Г. В. Барановский), „Архитектурная энциклопедия второй половины XIX века”, 1902-1908, St. Peterburg



21.) Seinapaneel Issel'i järgi (album VII, 1904. a., lk. 438)

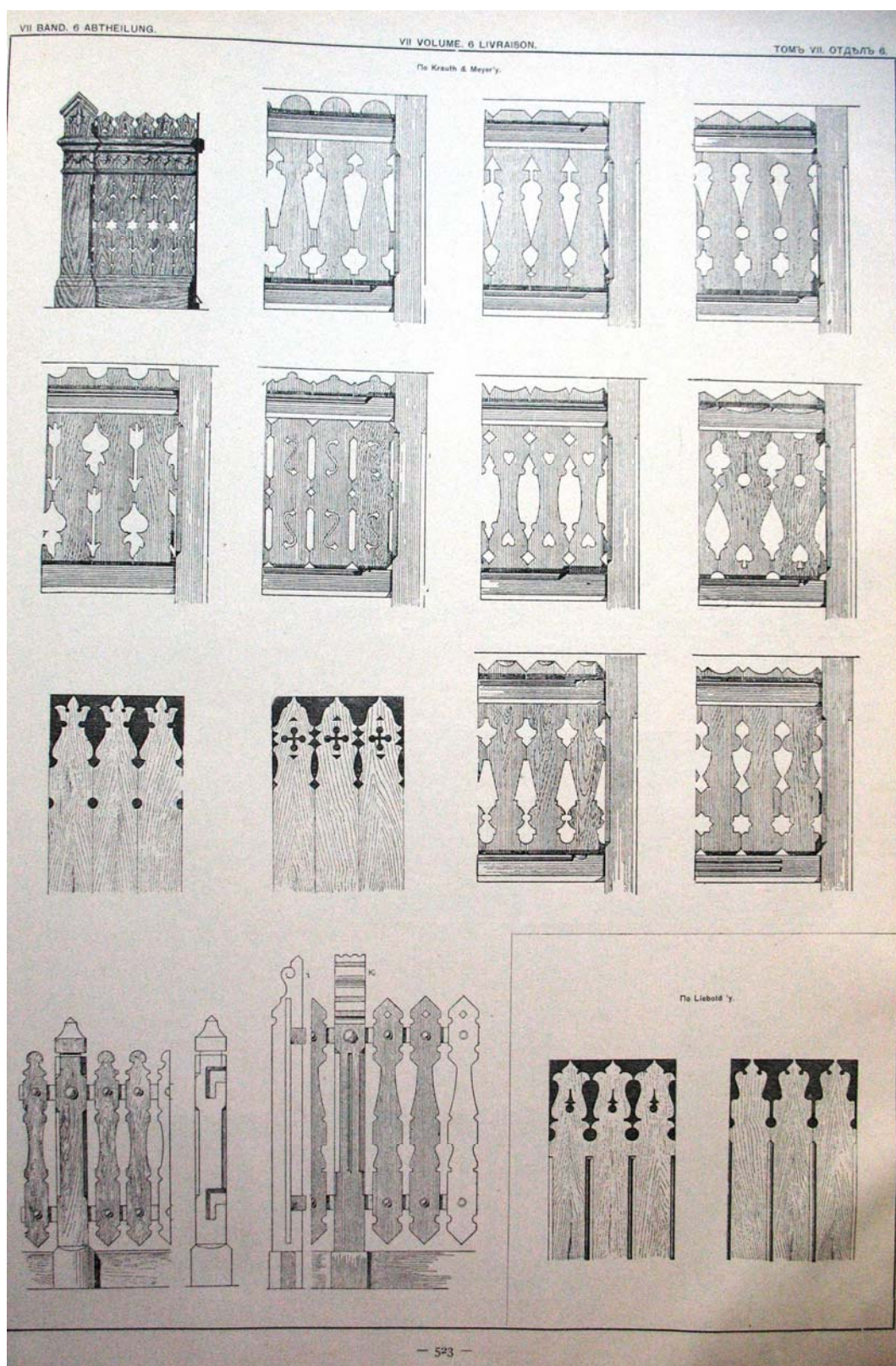


22.) Seinapaneelid: (vasakul) M. Kimbel, (paremal) arh. Cremer & Wolfenstein (album VII, 1904. a. , lk. 438)



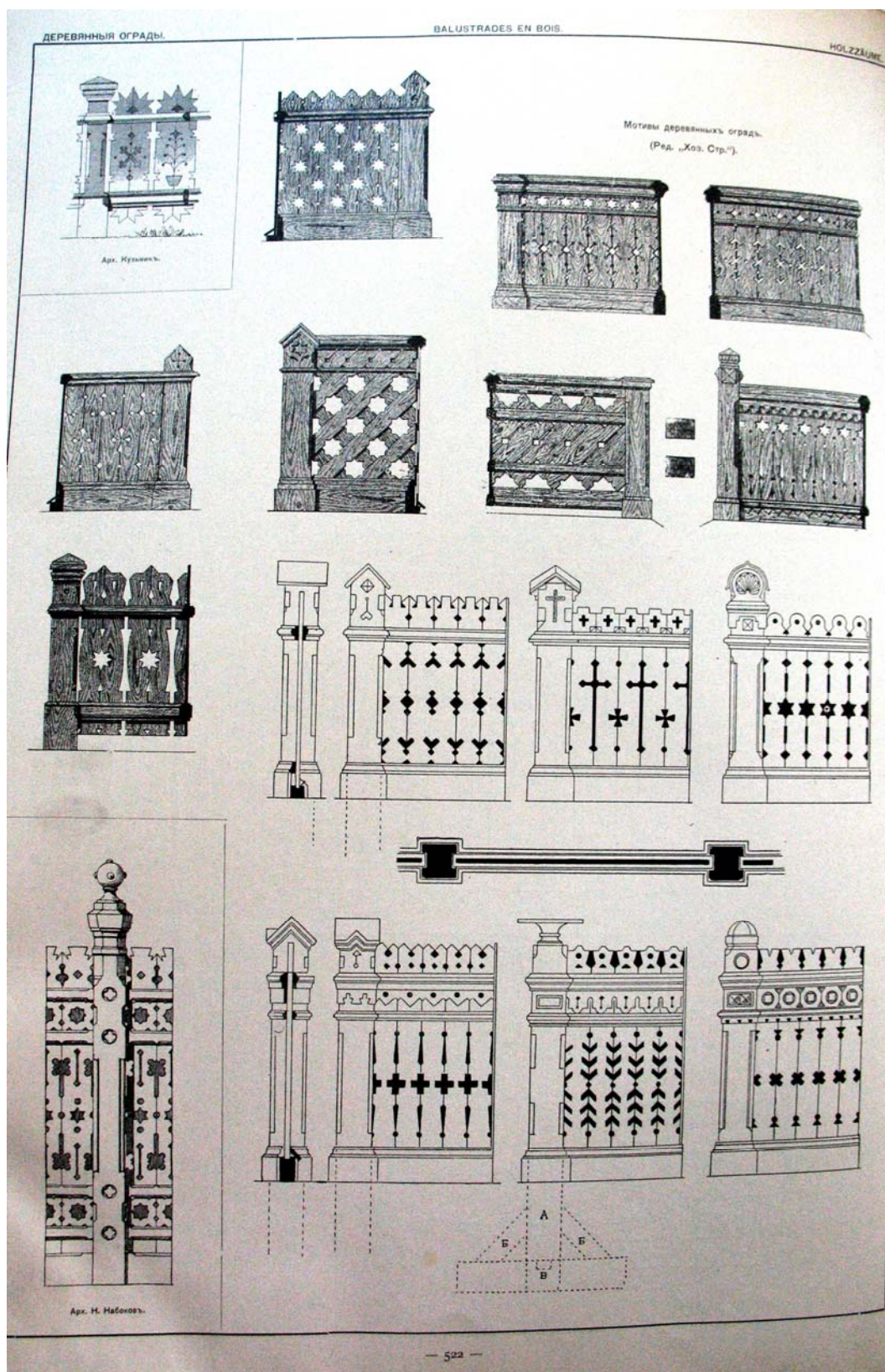
23.) Piirded A. Grief'i järgi (album VII, 1904. a., lk. 524)

Lisa 1.7 G. V. Baranovskii (Г. В. Барановский), „Архитектурная энциклопедия второй половины XIX века”, 1902-1908, St. Peterburg



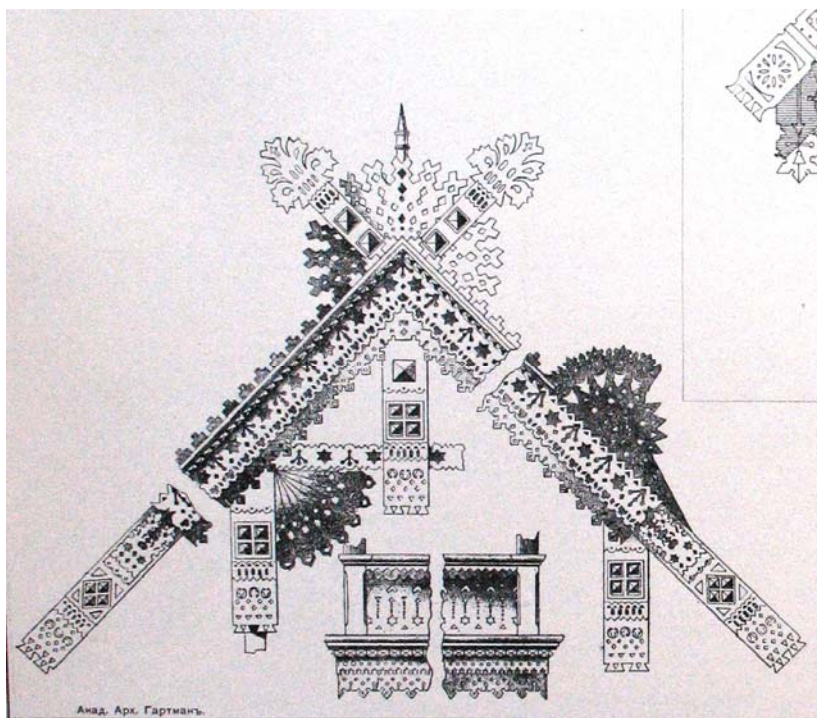
24.) Piirded ja laudise saelõikelised lõpetused: Krauth & Meyer'i järgi; (all paremal) arh. V. Liebold (album VII, 1904. a., lk. 523)

Lisa 1.7 G. V. Baranovskii (Г. В. Барановский), „Архитектурная энциклопедия второй половины XIX века”, 1902-1908, St. Peterburg

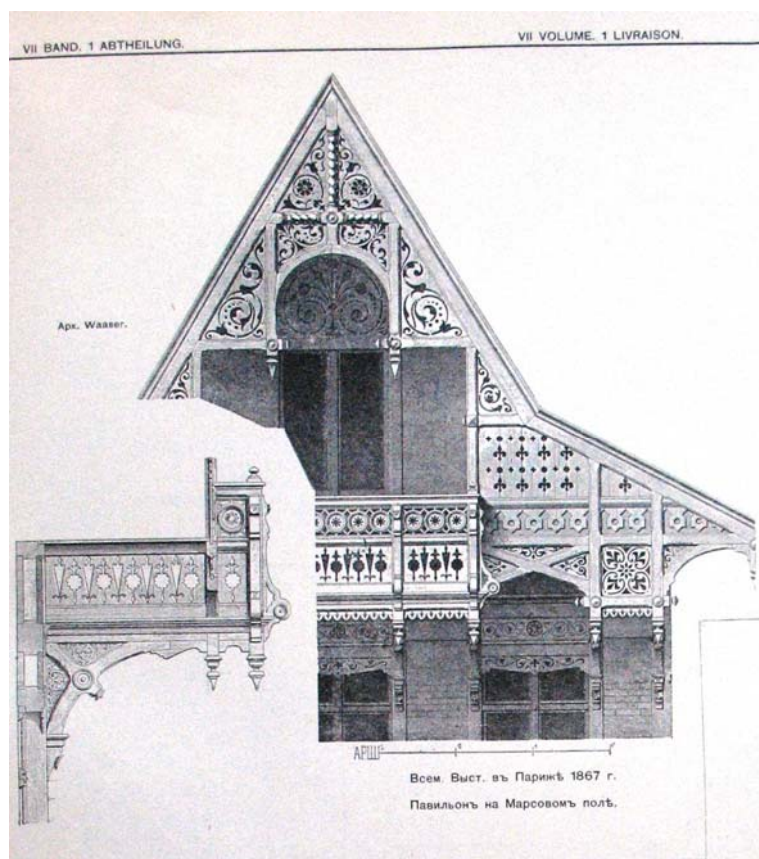


25.) Piirded: (vasakul üleval) arh. Kuzmin; (keskel) näited ajakirja „Ehitaja” toimetuselt; (all vasakul) arh. N. Nabokov (album VII, 1904. a., lk. 522)

Lisa 1.7 G. V. Baranovskii (Г. В. Барановский), „Архитектурная энциклопедия второй половины XIX века” , 1902-1908, St. Peterburg

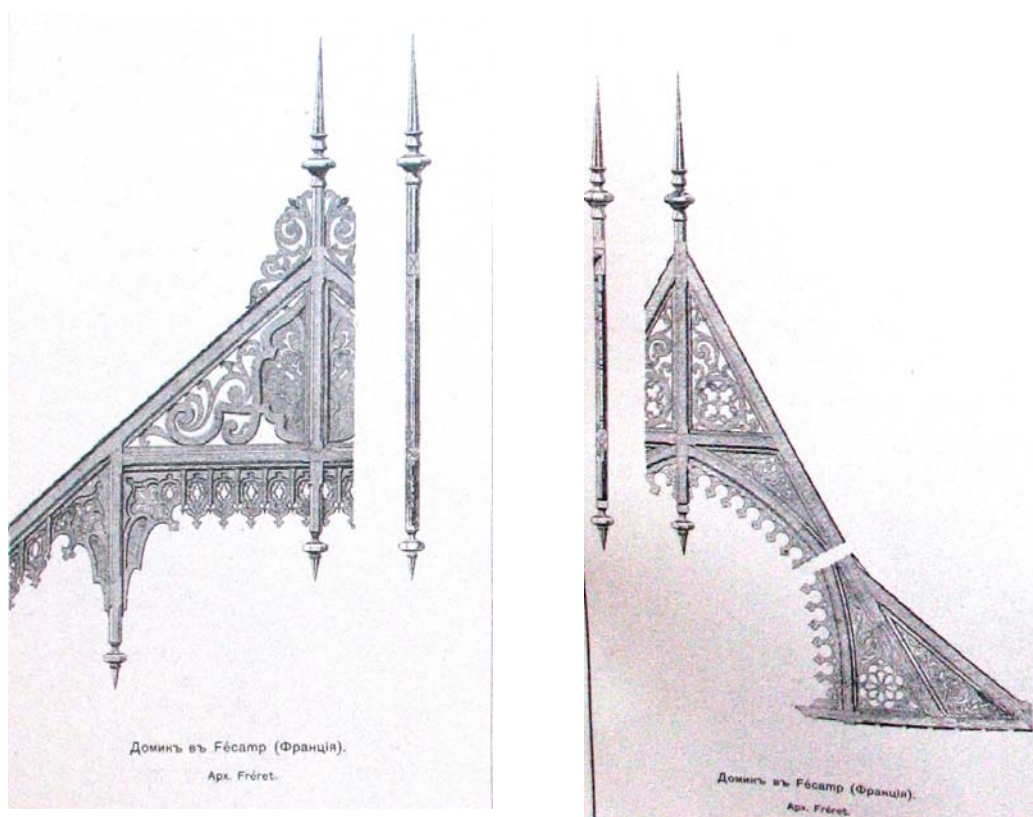


26.) Vene rahvusromantiline puitdekoor, akad. arh. Hartman (Gartman), (album VII, 1904. a., lk. 105)

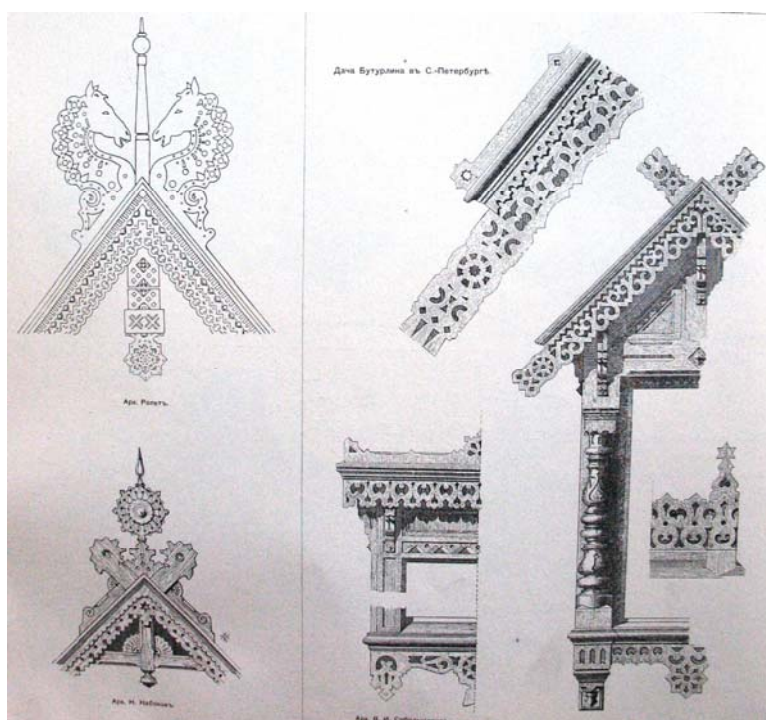


27.) 1867.a. Pariisi maailmanäitus, paviljon Marsi väljakul, arh. Waaser (album VII, 1904. a., lk.107)

Lisa 1.7 G. V. Baranovskii (Г. В. Барановский), „Архитектурная энциклопедия второй половины XIX века”, 1902-1908, St. Peterburg



28.) Viiluväljade kaunistused (Prantsusmaa), arh. Fréret (album VII, 1904. a., lk. 106)



29.) Puitdekoor (vene moodi): (vasakul üleval) Arh. Ropet; (paremal) arh. V. I. Sobolšikov (suvila St. Peterburis); (all vasakul) arh. N. Nabokov (album VII, 1904. a., lk. 104)