

TALLINNA LINNAS, MEREKRAJONIS,
 KARU TÄNAV NR. 11 JA HOLLANDI TÄNAV NR. 16 VAHEL
 ASUVA MAJAVALDUSE
PLAAN

MÕÖT 1:100

MAJAVALDUSE KOOSSEIS: ÜKS KIVIST NELJAKORRUSELINE ELUMAJA,
 ÜKS PUIDUST KAHEKORRUSELINE ELUMAJA, ÜKS KIVIST KAHEKORRU-
 SELINE ELUMAJA JA ÜKS KIVIST KUUR-GARAAŽ

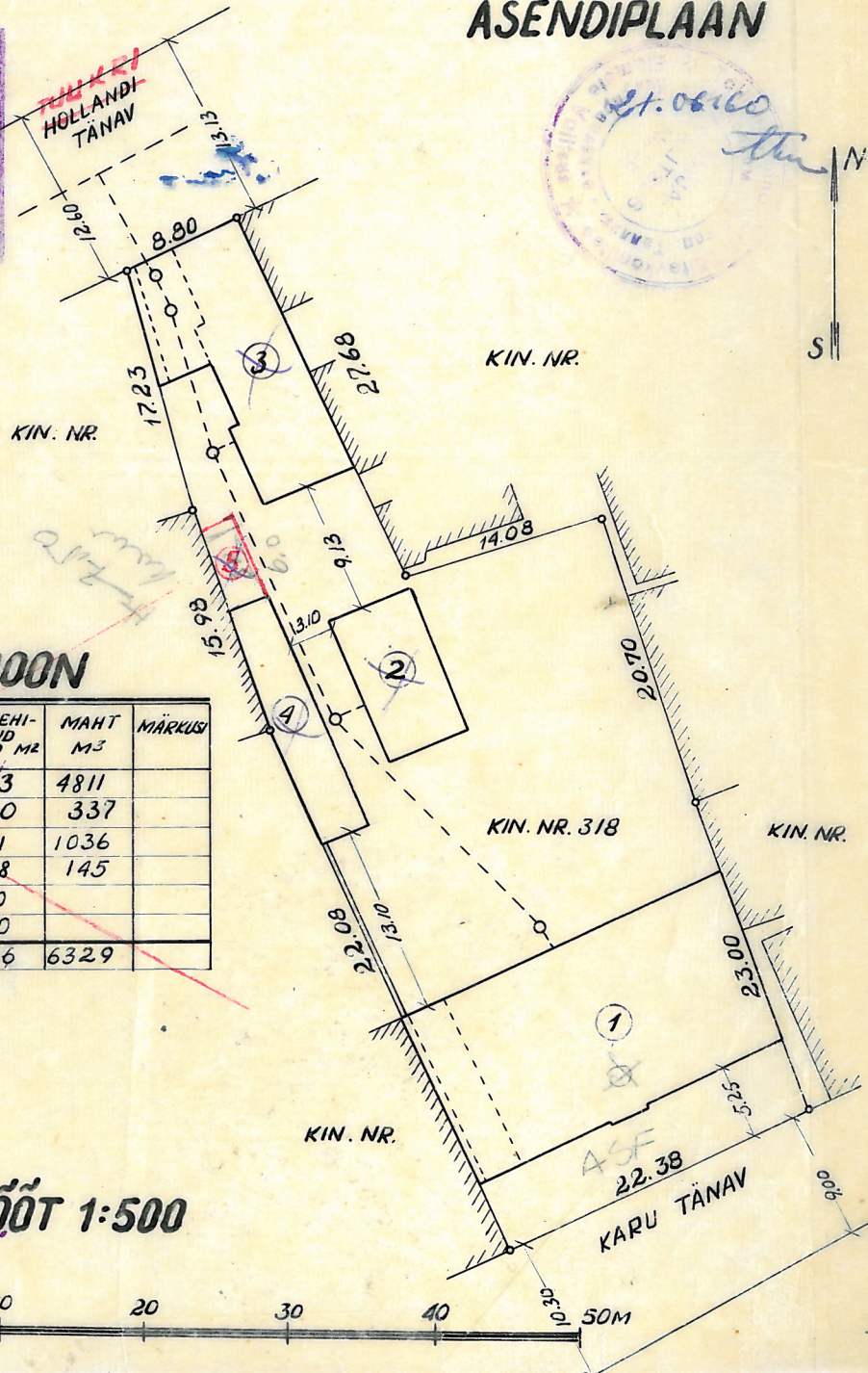
MAJAVALDUSE VALDAJA: TALLINNA LINNA ELAMUTE VALITSUSE
 MAJAVALITSUS NR. 41

MAJAVALITSEJA ALLKIRI JA KUUPÄEV:

Jooksvad muudatused
 läbi viidud „20“ 05. 1969.
 tehnik-inventariseerija: *A. S. ...*
 Kontrollitud „12“ 02. 1969.
 tehnik-inventariseerija: *M. ...*

ASENDIPLAAN

MAJAVALDUSE PINDALA 1385 M²
 EELHITATUD PINDALA 586 M²
 EELHITUSE % 42
 HOONETE MAHT 6329 M³



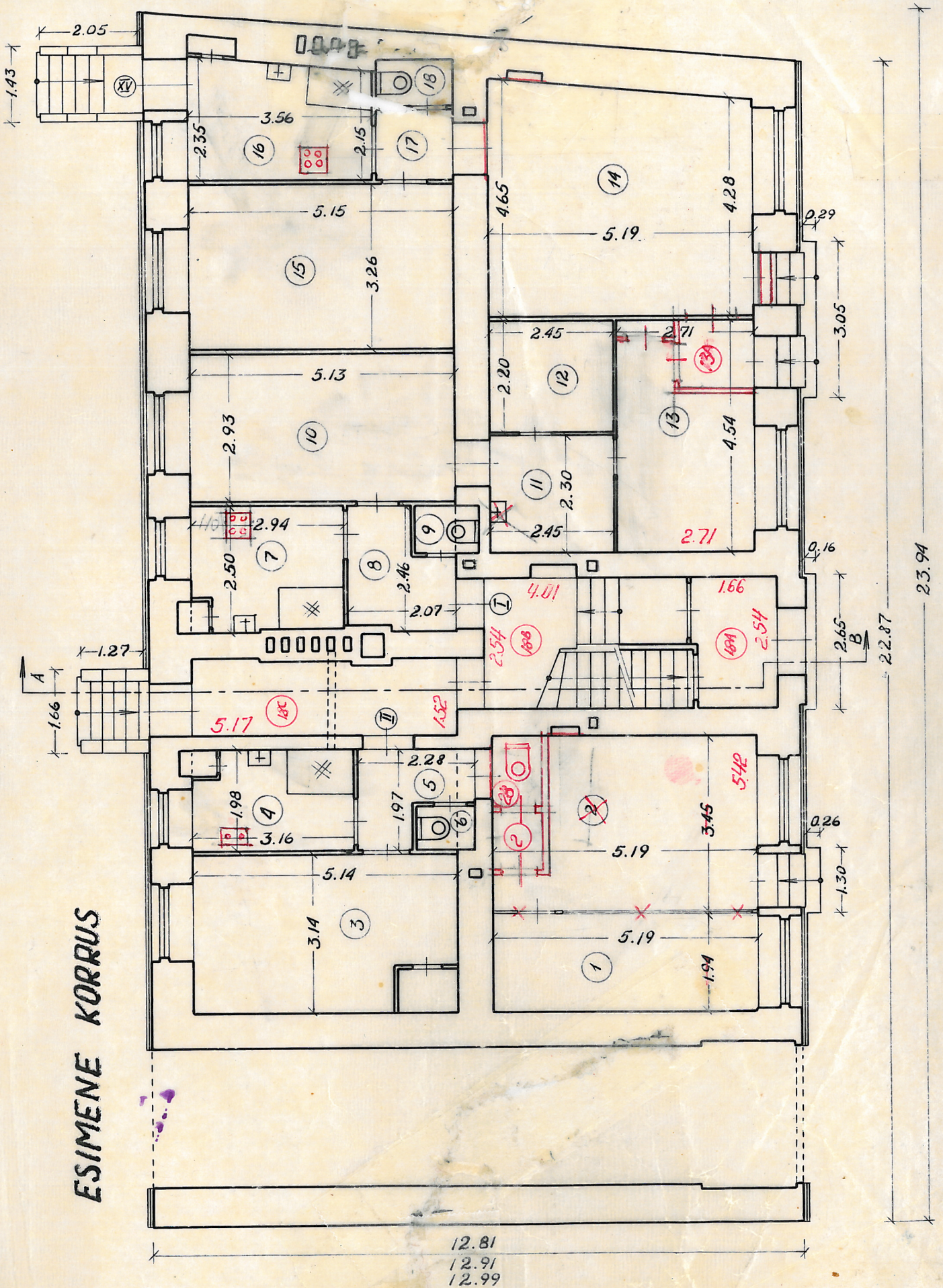
HOONETE EKSPLIKATSIOON

NR.	EHITISE NIMETUS	MATERJAL	PÕHI-PIND M ²	TÄISEHITATUD PIND M ²	MAHT M ³	MÄRKUS
1	ELUMAJA	KIVI - KATUS PLEKK	302	313	4811	
2	"	PUIT - KATUS PAPP	59	60	337	
3	"	KIVI - KATUS PLEKK	149	151	1036	
4	KUUR-GARAAŽ	"	58	58	145	
5	ÕHUST. KAEVUD	BETOONTORUD φ 0.80 3TK.		2.0		
6	MÜÜR	BLOKK-KIVI 0.15x 13.10		2.0		
KOKKU			568	586	6329	

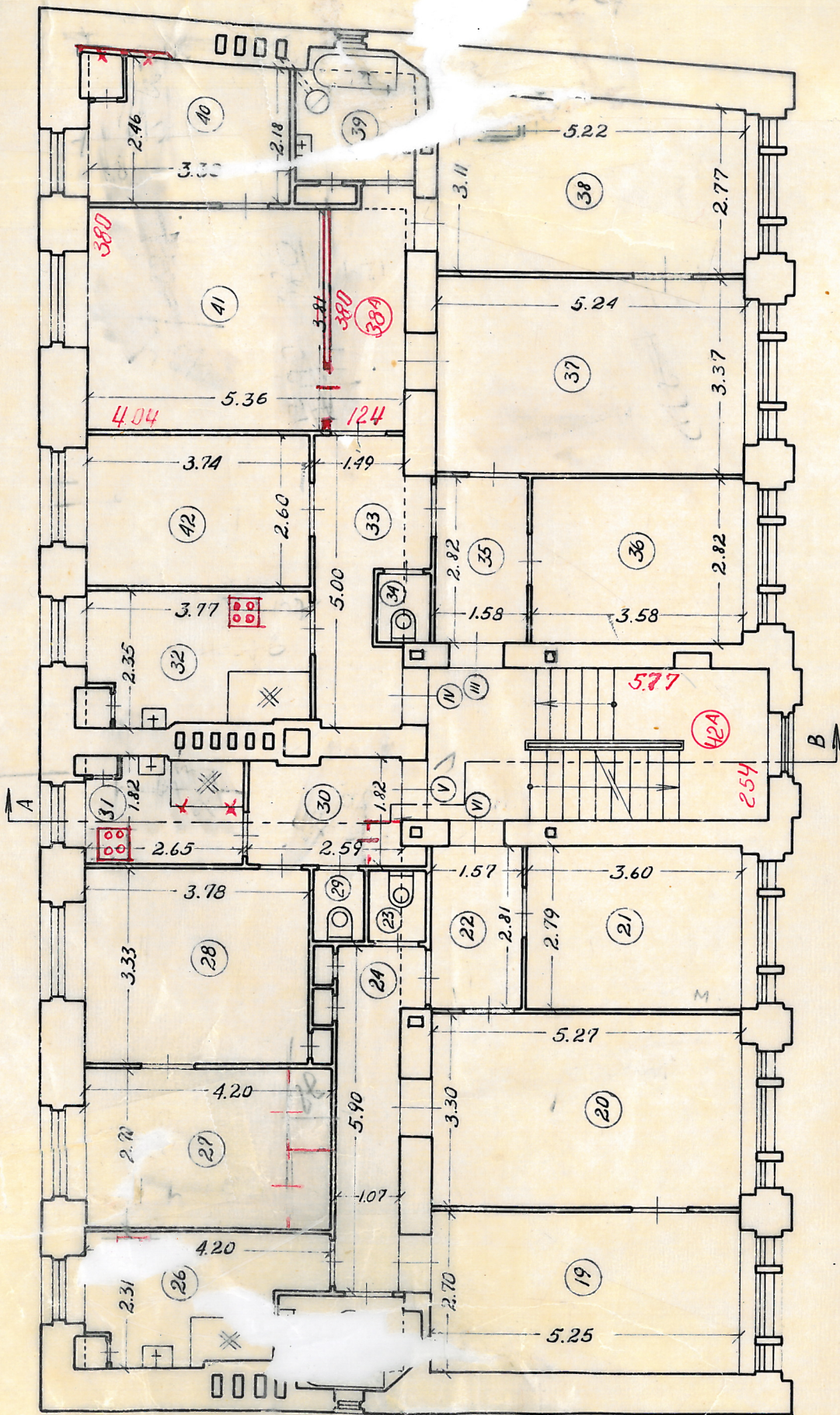
MÕÖT 1:500



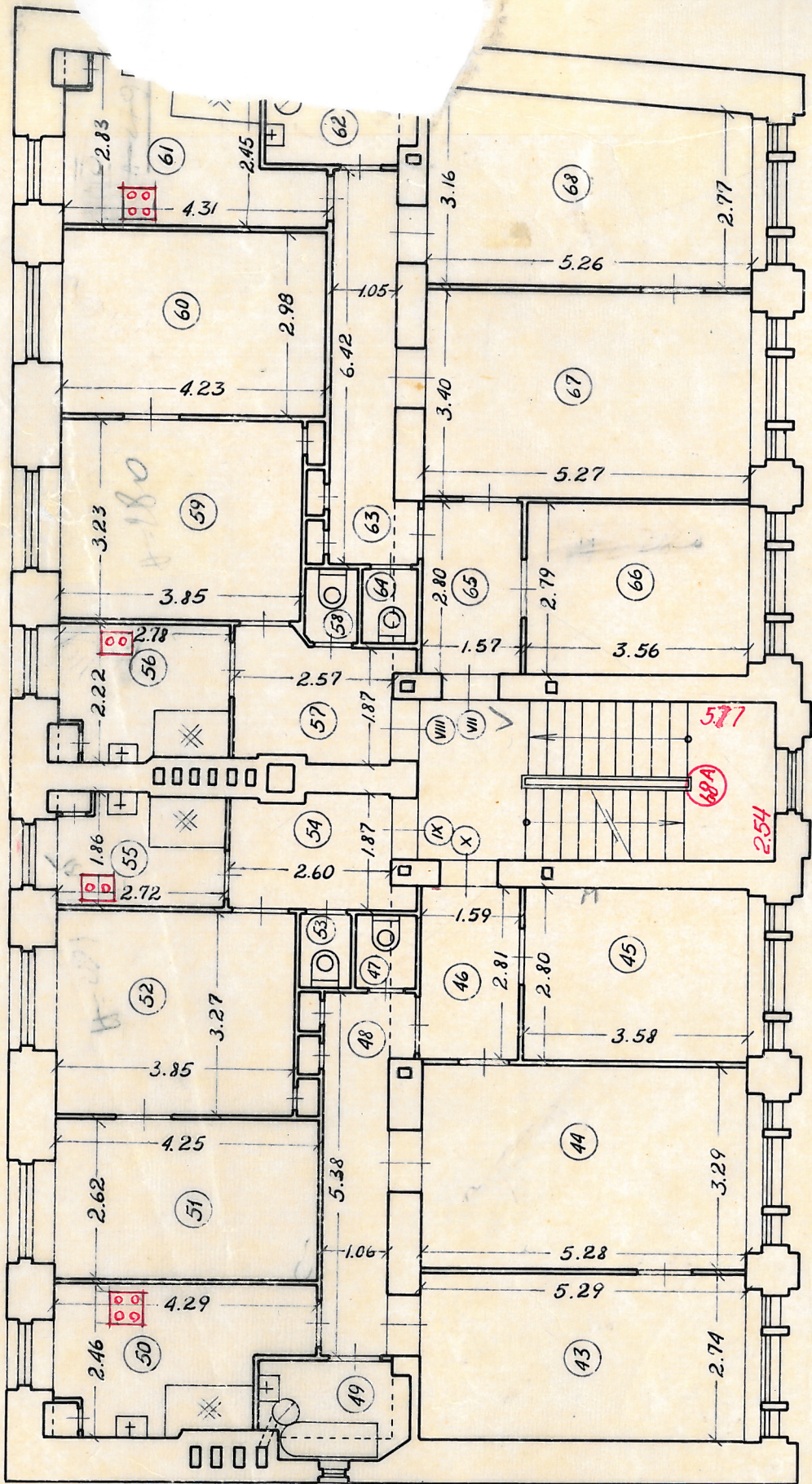
ESIMENE KORRUS



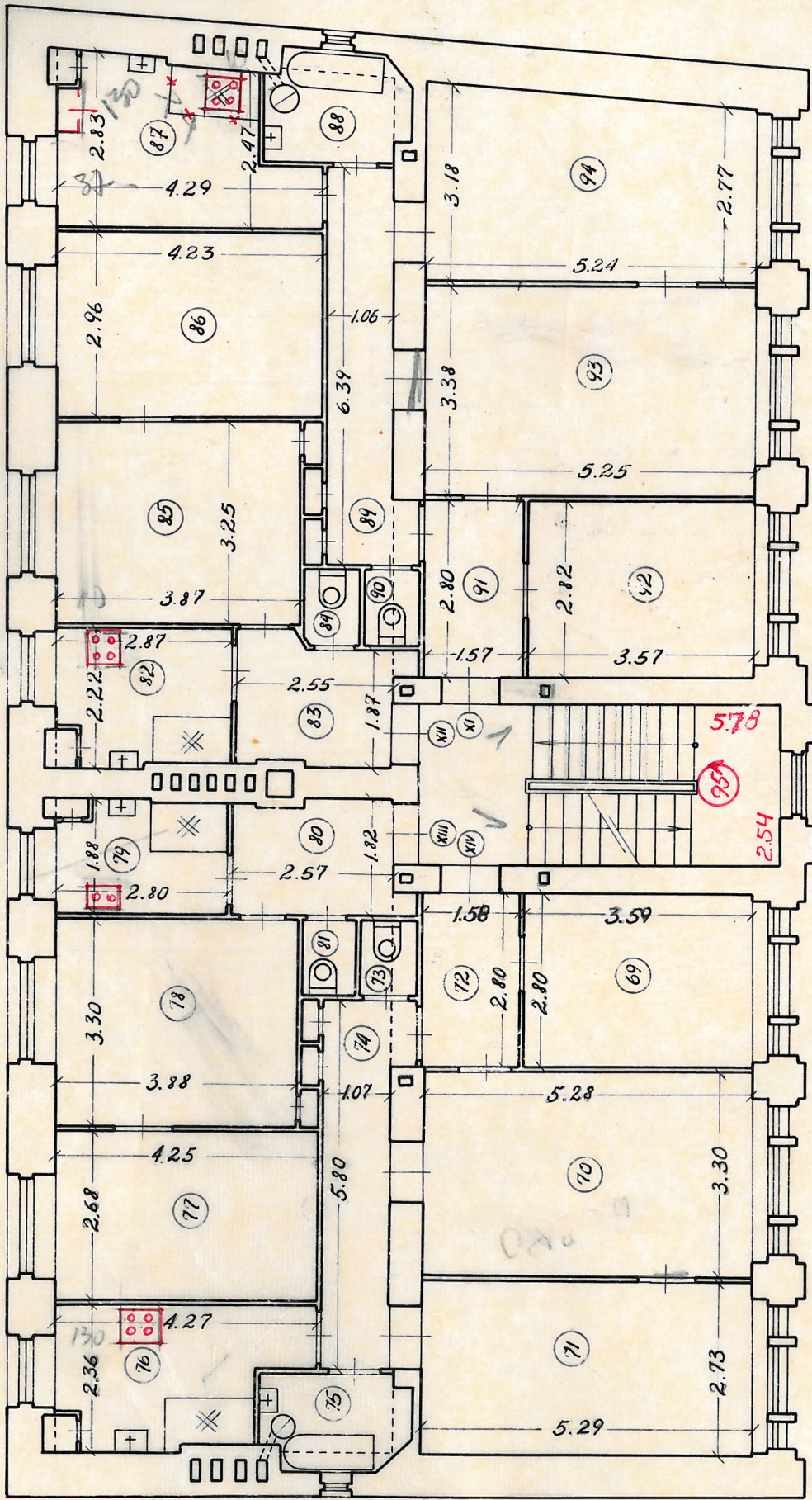
TEINE KURRUS



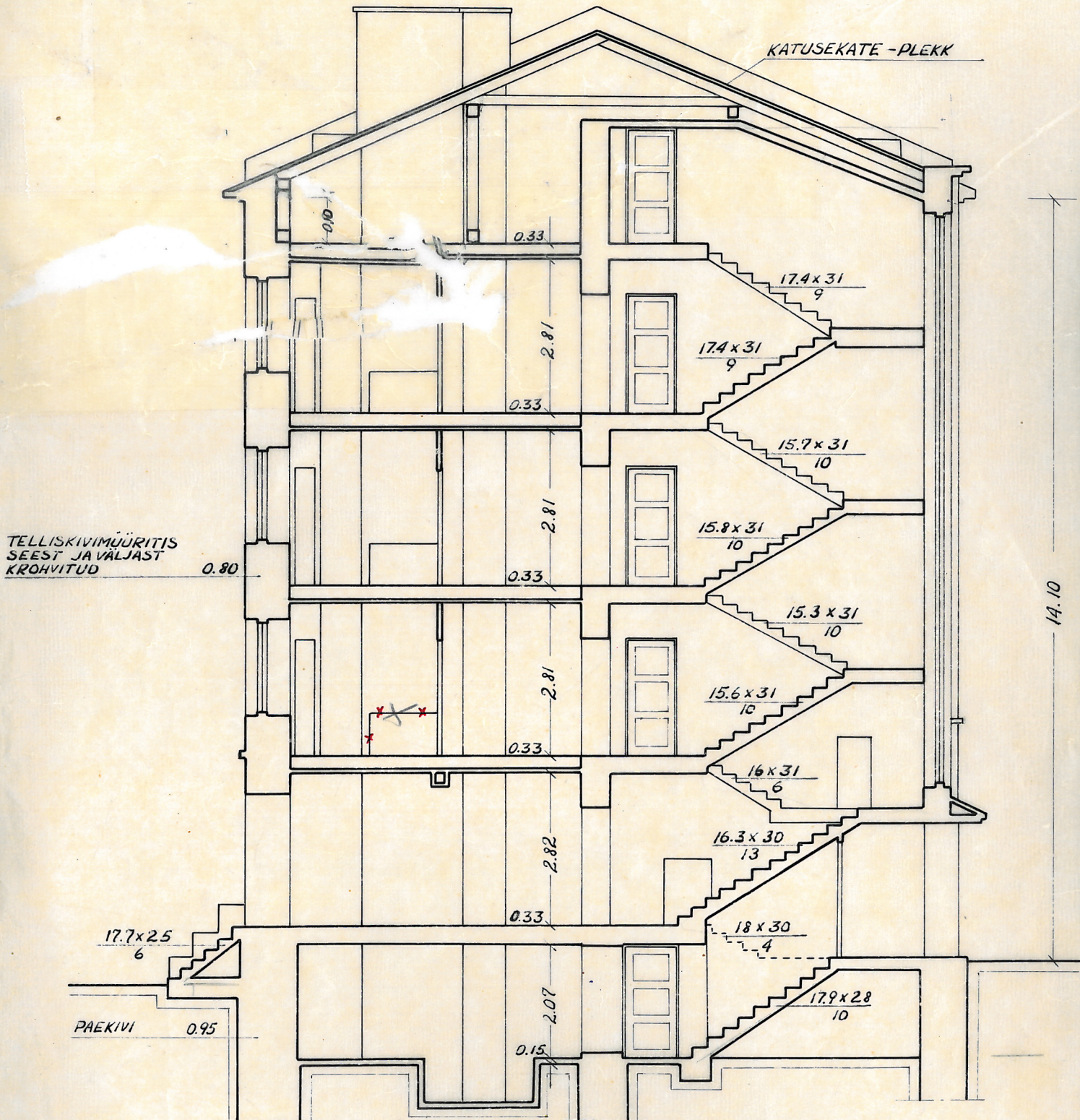
KOLMAS KORRUS



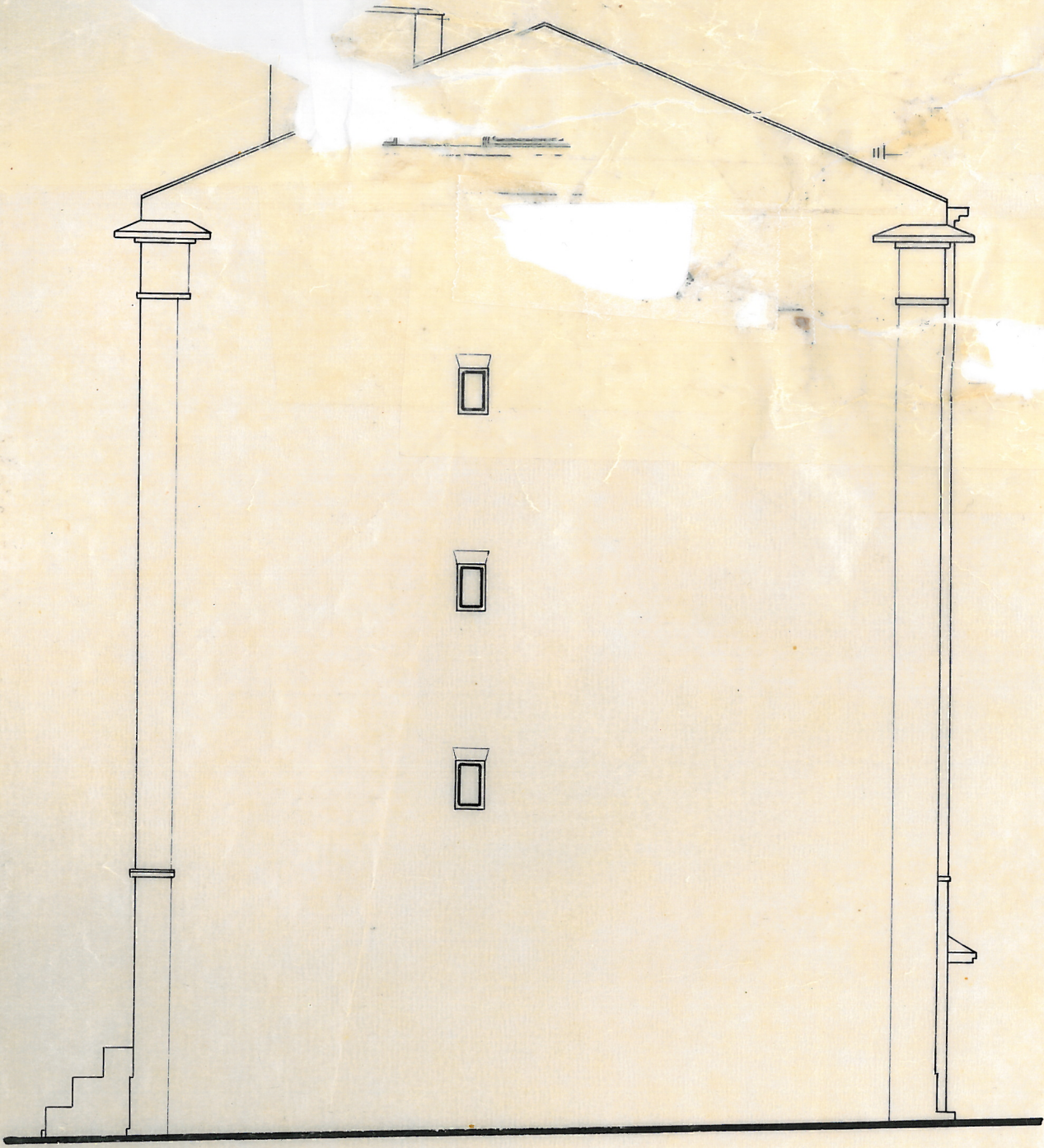
NEL JAS KORRUS



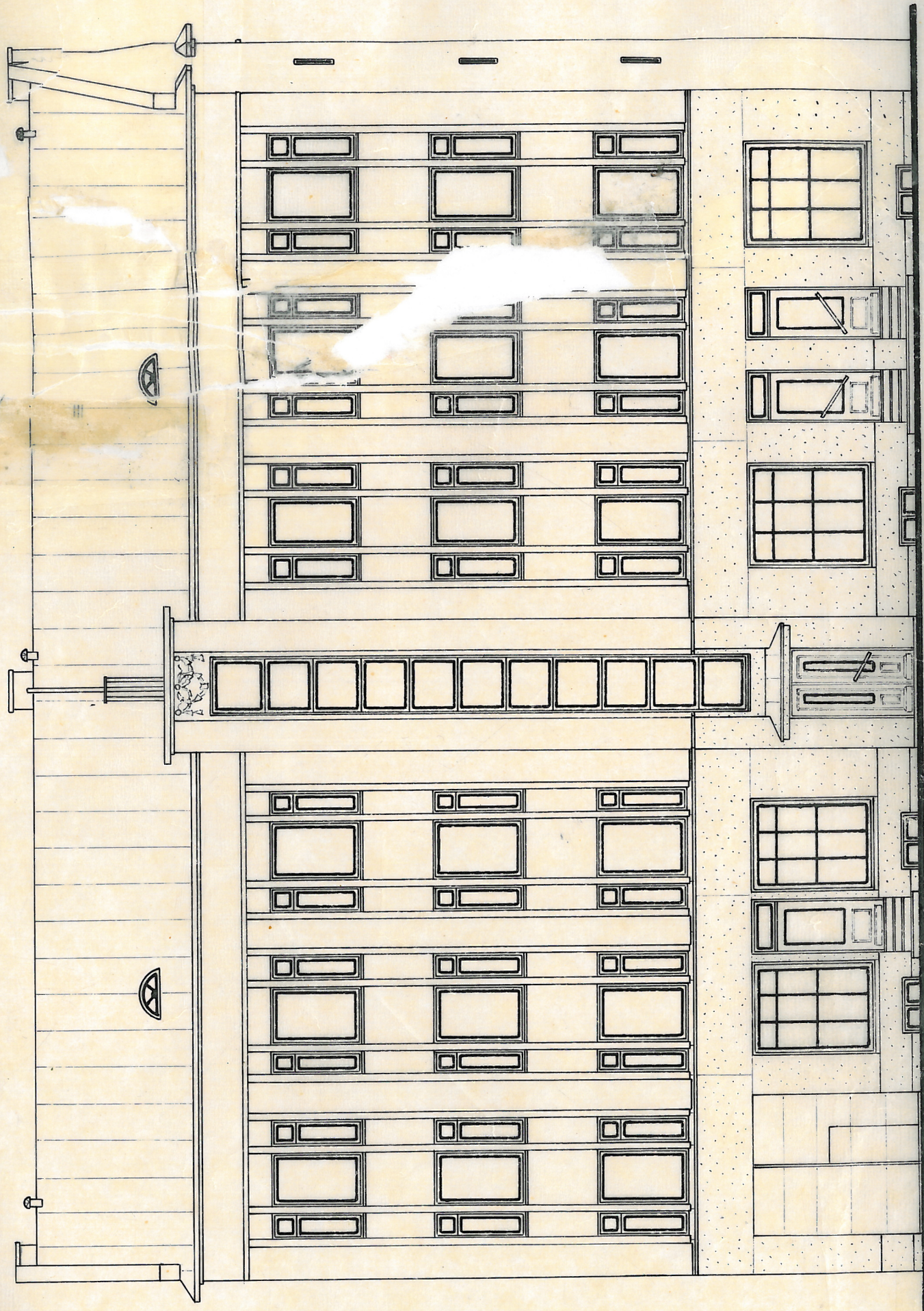
LÕIGE A-B



26



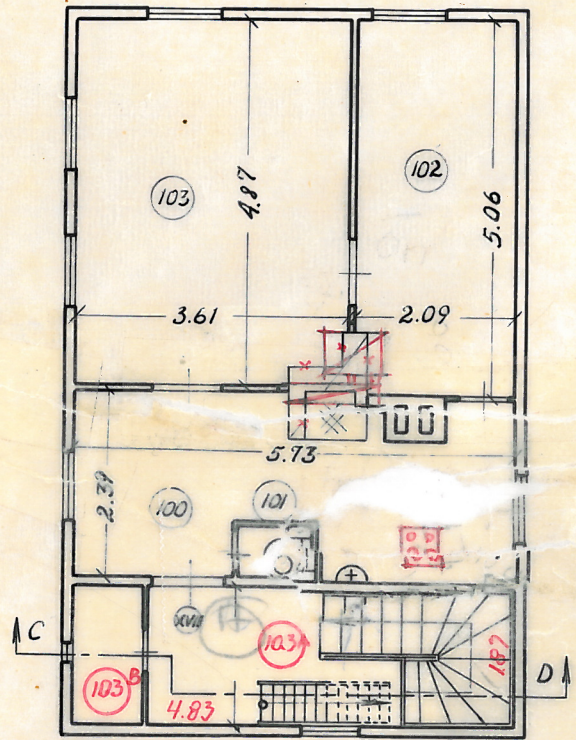
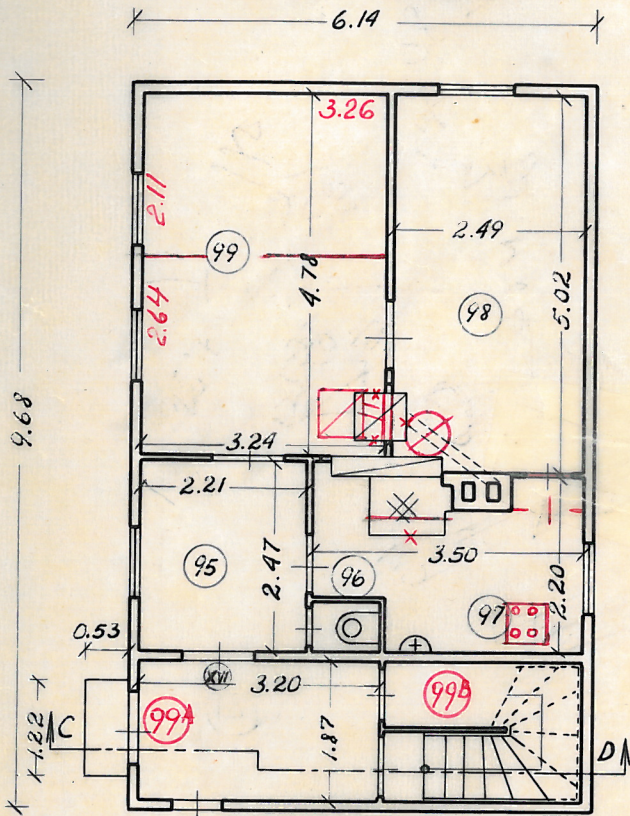
EESTVAADE



ELUMAJA NR. 2.

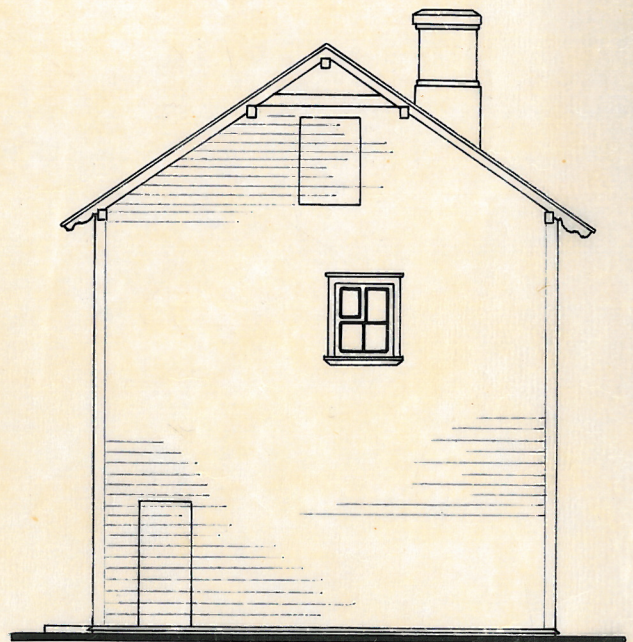
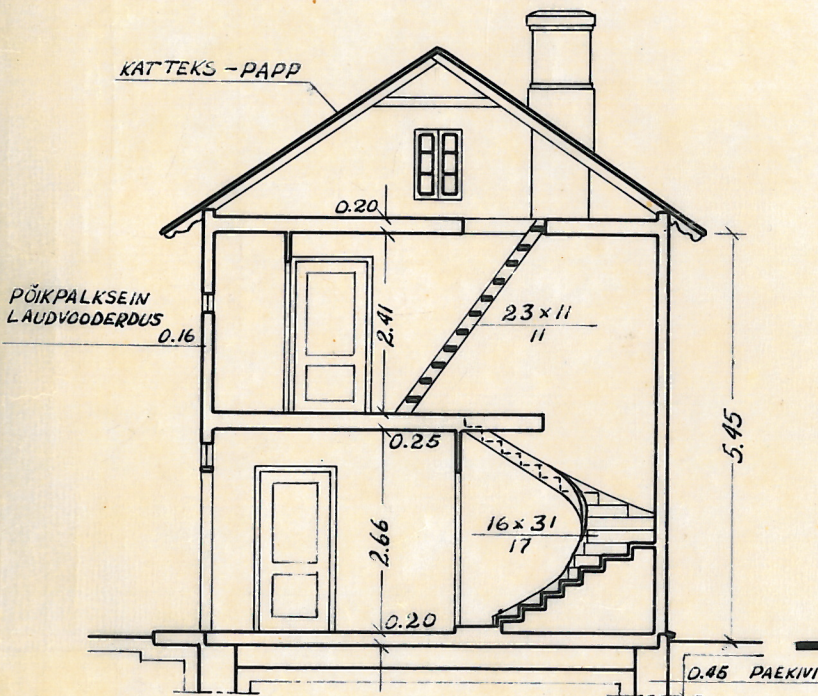
ESIMENE KORRUS

TEINE KORRUS

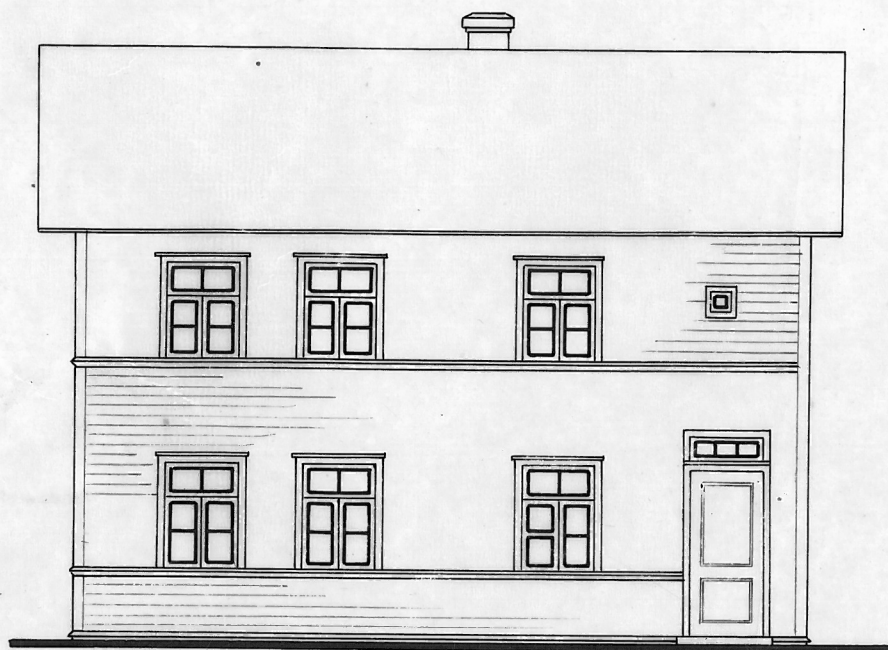


LÕIGE C-D

OTSAVAADE

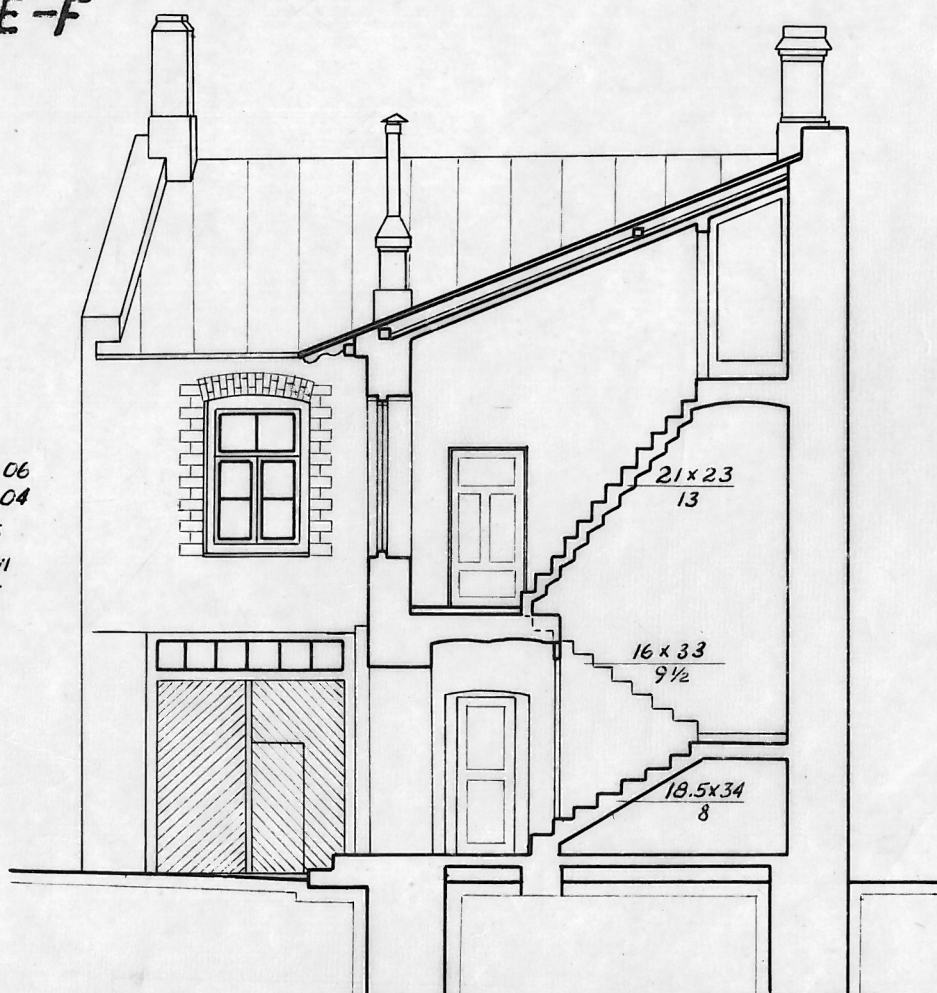


EESTVAADE



ELUMAJA NR.3.

LÕIGE E-F



RUUMIDE H=

I KORRUS 3.06

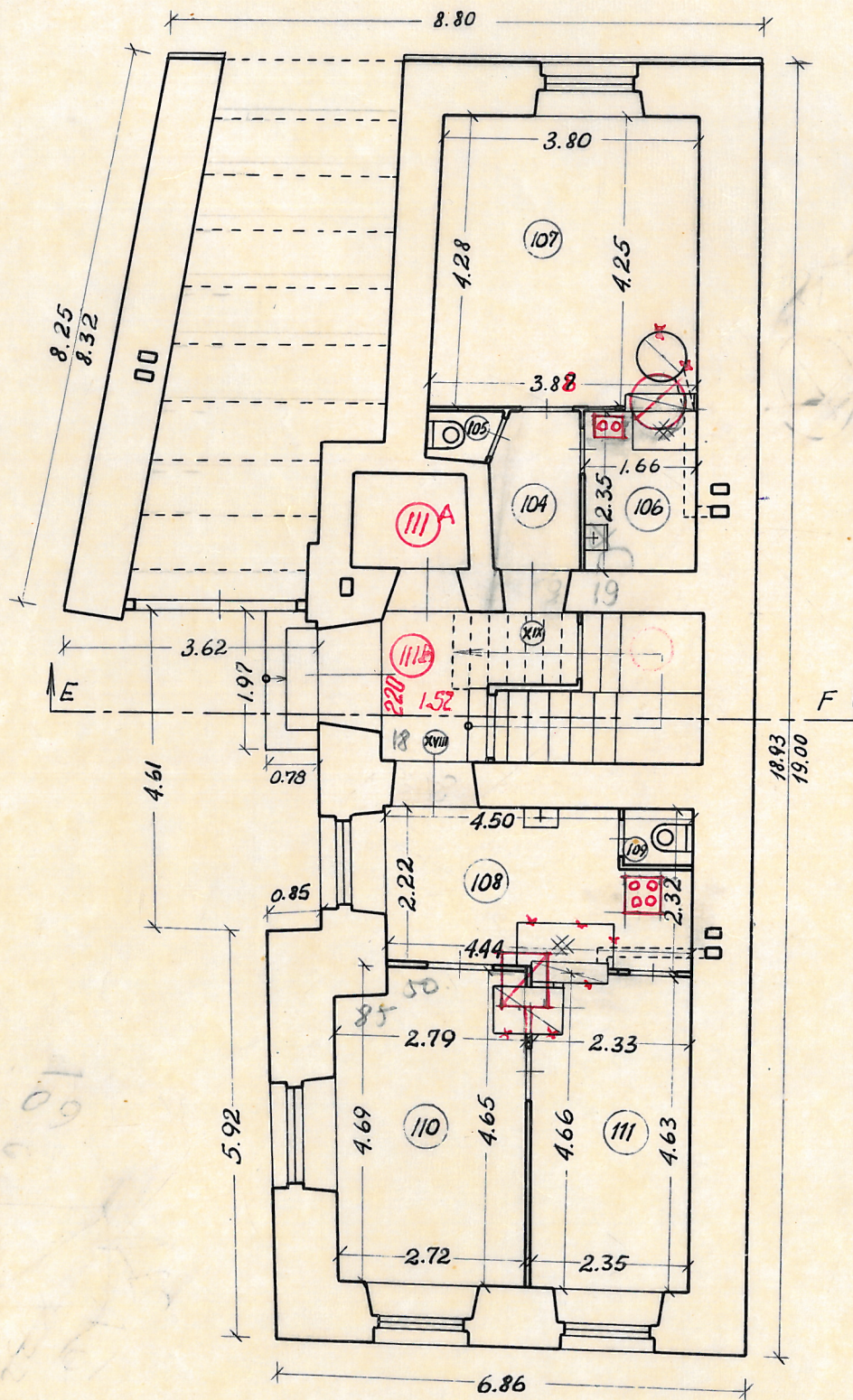
II ——— 3.04

KUBATUURI H= 6.95

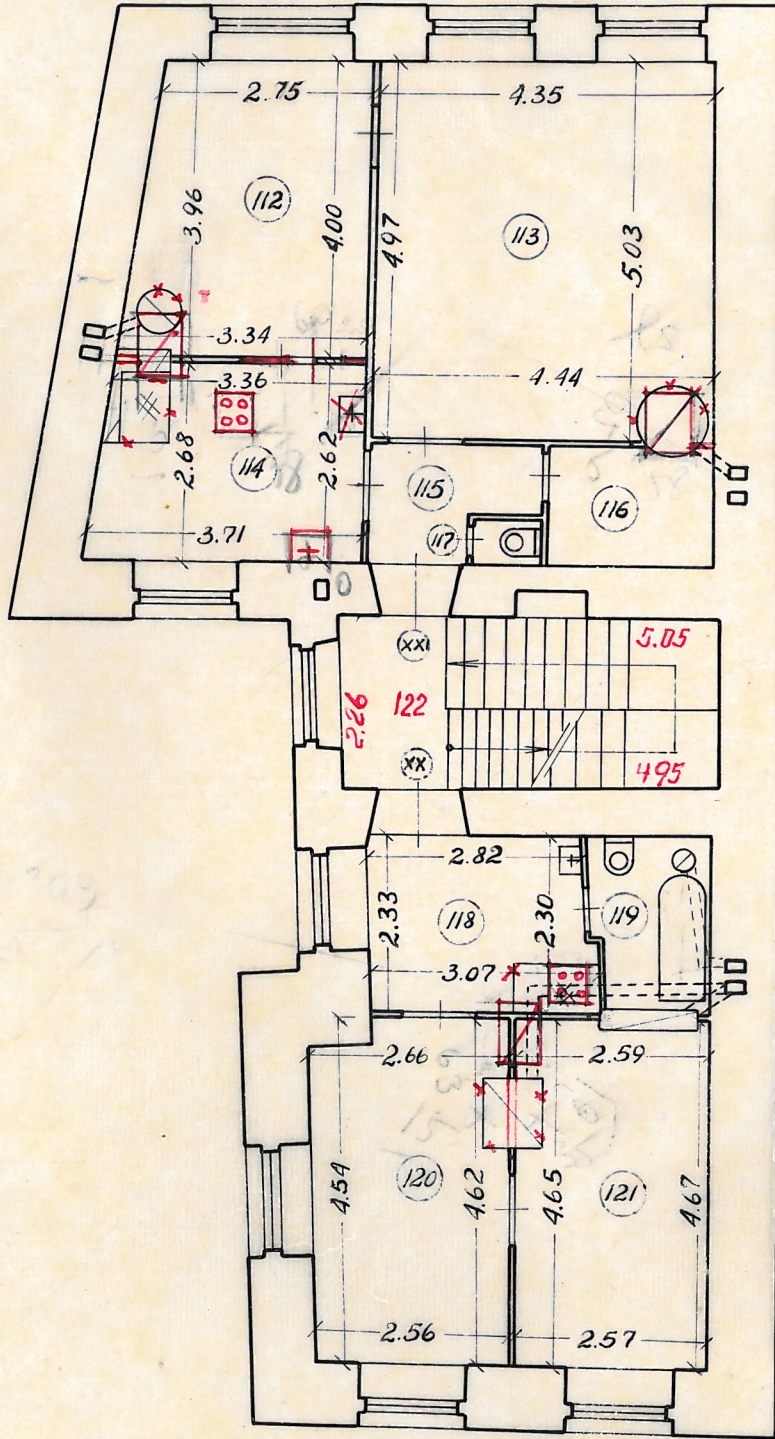
VÄLISSEINAD - PÆKIVI

KATUSEKATE - PLEKK

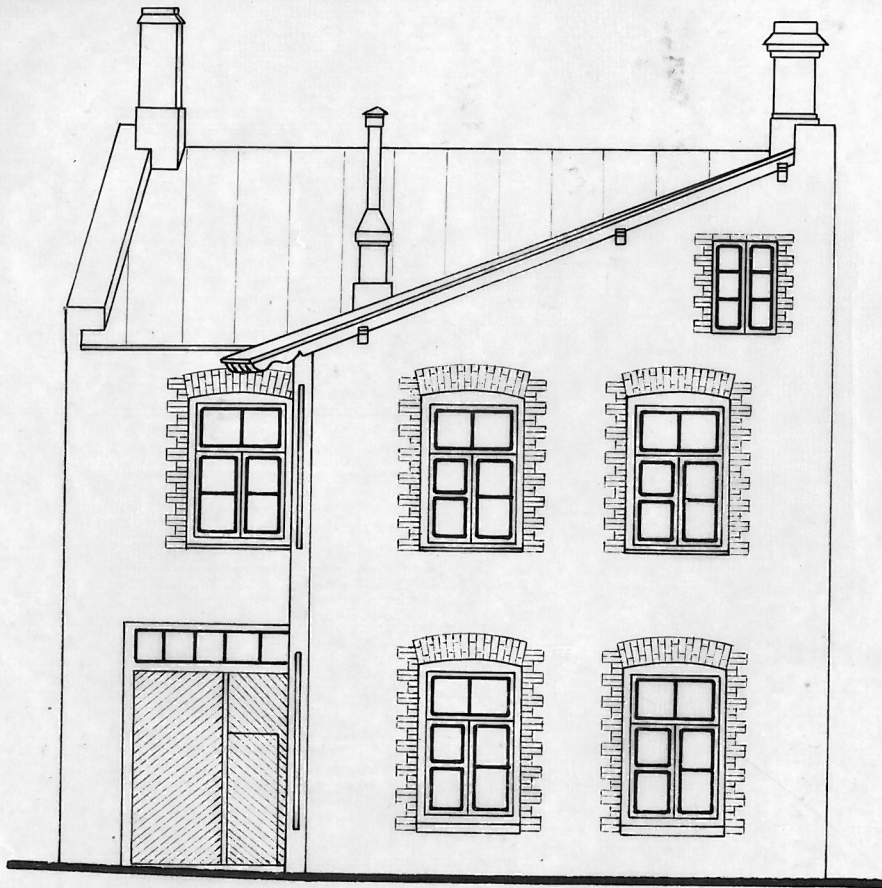
ESIMENE KORRUS



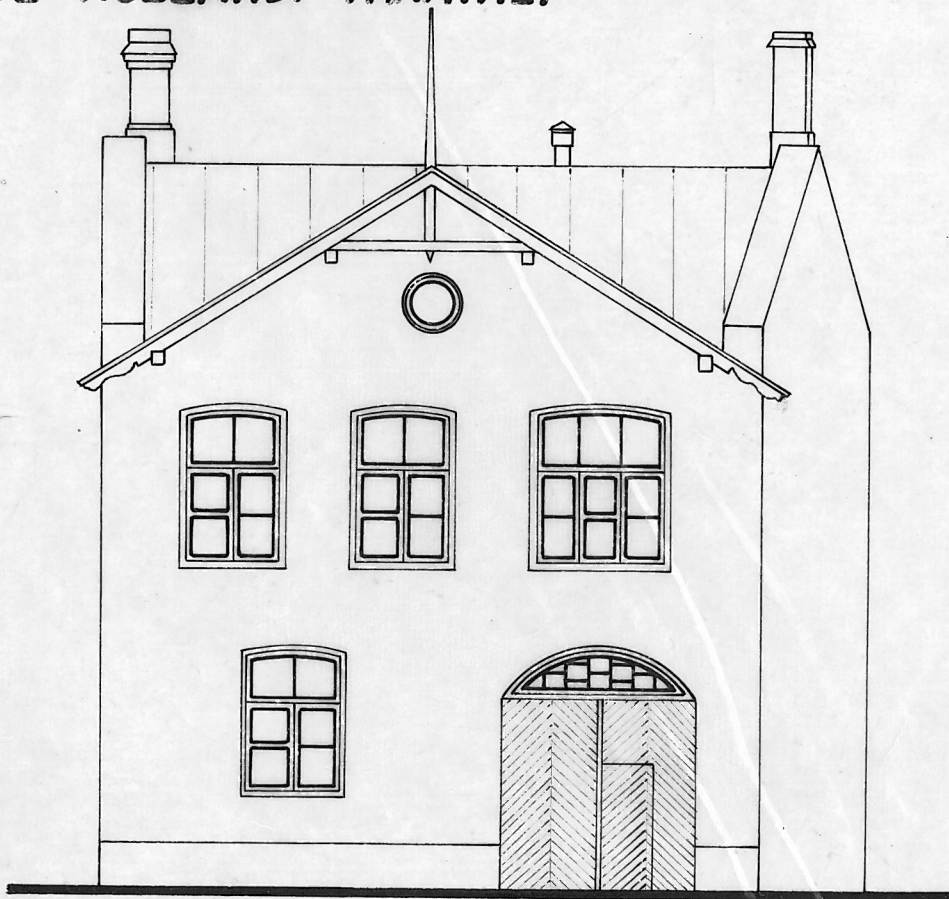
TEINE KORRUS



VAADE KARU TÄNAVALT

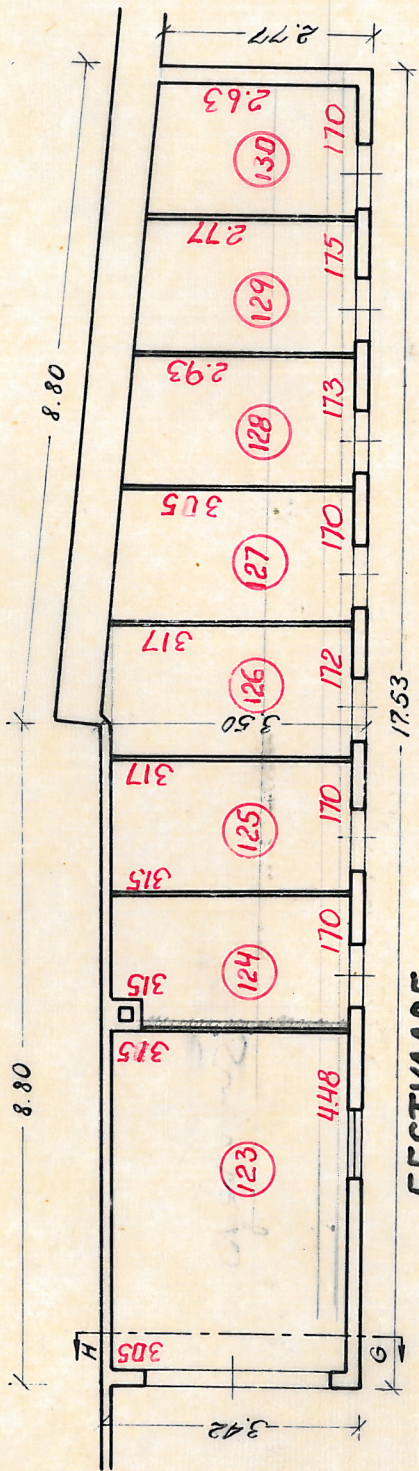


VAADE HOLLANDI TÄNAVALT

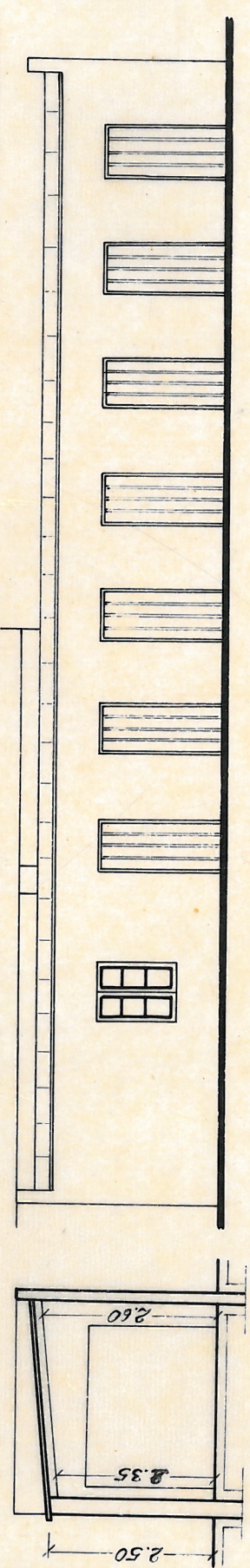


HOONE NR. 4. KUR - GARAAŽ.

PÕHIPLAAN



LÕIGE G-H



KATUS - PLEKK
VALISSEINAD - TSEMENTKIVI.

RUUMIDE EKSPLIKATSIOON

JRK. NR.	RUUMI NIMETUS	PINNA KORRUTISAVALDIS	PÕRANDA PINNAD M ²			MÄRKUSI
			ELAMIS-PIND	MITTEEL-PIND	KASULIK-PIND	
1	2	3	4	5	6	7
		ELUMAJA NR. 1.				
1A	VANNITUBA	$1.81 \times 3.80 + (0.30 \times 0.15 : 2) - 3.14 \times 0.40 \times 0.40 : 4$ KELDRIKORRUSEL			6.9 6.9	
1	ÄRIRUUM	1.94 × 5.19		10.1	10.1	
2	— " —	3.45 × 5.19		17.9	17.9	
3	ELUTUBA	$3.14 \times 5.14 - 0.97 \times 1.24 + 0.90 \times 1.17$	16.0		16.0	
4	KÖÖK	$1.98 \times 3.16 - 0.50 \times 0.56 - 0.85 \times 1.25 + 0.49 \times 0.70$			5.3	
5	ESIK	$1.97 \times 2.28 - 0.95 \times 1.22$			3.3	
6	WC	0.84×1.16			1.1	
		KOKKU KORTER NR. 2	16.0		25.7	
7	KÖÖK	$2.50 \times 2.94 - 0.38 \times 0.70 - 0.80 \times 1.25 - 0.08 \times 1.56 + 0.53 \times 0.64$			6.3	
8	ESIK	$2.07 \times 2.46 - 0.14 \times 0.83 - 0.83 \times 1.04$			4.1	
9	WC	0.88×1.27			1.1	
10	ELUTUBA	2.93×5.13	15.0		15.0	
		KOKKU KORTER NR. 1	15.0		26.5	
11	ÄRIRUUM	2.30×2.45		5.6	5.6	
12	— " —	2.20×2.45		5.4	5.4	
13	— " —	2.71 × 4.54		12.3	12.3	
14	— " —	4.65 + 4.28 × 5.19 : 2		23.2	23.2	
15	ELUTUBA	3.26×5.15	16.8		16.8	
16	KÖÖK	$(2.35 + 2.15 \times 3.56 : 2) + 0.38 \times 0.98 - 0.75 \times 1.25$			7.4	
17	VAHEKODA	1.35×1.48			2.0	
18	WC	0.90×1.47			1.3	
		KOKKU KORTER NR. 15	16.8		27.5	
		KOKKU 1. KORRUS	47.8	74.5	161.1	
19	ELUTUBA	2.70×5.25	14.2		14.2	
20	— " —	3.30×5.27	17.4		17.4	
21	— " —	2.79×3.60	10.0		10.0	
22	ESIK	1.57×2.81			4.4	
23	WC	0.90×1.21			1.1	
24	KORIDOR	$1.07 \times 5.90 + 0.43 \times 0.99 + 0.32 \times 0.62 \times 2$			7.1	
25	VANNITUBA	$1.58 \times 2.40 - 0.27 \times 0.42 - (0.80 \times 0.38 : 2) - 0.18 \times 0.29 - 3.14 \times 0.40 \times 0.40 : 4$			3.4	
26	KÖÖK	$2.31 \times 4.20 - 0.36 \times 0.61 + 0.55 \times 0.50 - 0.68 \times 1.42 - 1.06 \times 1.26$			7.5	
		KOKKU KORTER NR. 6	41.6		65.1	
27	ELUTUBA	2.70 × 4.20	11.3		11.3	
28	— " —	$3.33 \times 3.78 + 0.32 \times 0.60$	12.8		12.8	
29	WC	0.85×1.21			1.0	
30	ESIK	1.82 × 2.59 + 0.31 × 0.47 - 0.15 × 0.72 - 0.07 × 0.59			4.8	
31	KÖÖK	1.82 × 2.65 - 0.35 × 0.60 + 0.29 × 0.74 - 0.86 × 1.23			3.8	
		KOKKU KORTER NR. 5	24.1		33.7	
32	KÖÖK	$2.35 \times 3.77 - 0.44 \times 0.79 + 0.58 \times 0.73 - 1.02 \times 1.42 - 0.09 \times 0.92$			7.4	
33	ESIK	$1.49 \times 5.00 - 0.50 \times 1.37 - 0.14 \times 0.19$			6.7	
34	WC	0.89×1.13			1.0	
35	ESIK	1.58×2.82			4.5	

1	2	3	4	5	6	7
36	ELUTUBA	2.82 x 3.58	10.1		10.1	
37	— " —	3.37 x 5.24	17.7		17.7	
38	— " —	3.11 + 2.77 x 5.22 : 2	15.3		15.3	
39	VANNITUBA	(2.20 + 2.10 x 2.22 : 2) - 0.30 x 0.73 - 0.13 x 0.48 - - 0.77 x 0.35 : 2 - 3.14 x 0.40 x 0.40 : 4			4.2	
40	ELUTUBA	(2.46 + 2.18 x 3.30 : 2) - 0.60 x 0.69 + 0.65 x 0.74	7.7		7.7	
41	— " —	3.81 x 5.36 + 0.40 x 0.90 + 0.28 x 0.90	21.0		21.0	
42	— " —	2.60 x 3.74	9.7		9.7	
		KOKKU KORTER NR. 3 JA 4	81.5		105.3	
		KOKKU 2. KORRUS	147.2		204.1	
43	ELUTUBA	2.74 x 5.29	14.5		14.5	
44	— " —	3.29 x 5.28	17.4		17.4	
45	— " —	2.80 x 3.58	10.0		10.0	
46	ESIK	1.59 x 2.81			4.5	
47	WC	0.88 x 1.20			1.1	
48	KORIDOR	1.06 x 5.38 + 0.44 x 0.90 + 0.32 x 0.62 x 2			6.5	
49	VANNITUBA	1.65 x 2.41 - 0.26 x 0.29 - 0.30 x 0.42 - (0.65 x 0.30 : 2) - 3.14 x 0.40 x 0.40 : 4			3.6	
50	KÖÖK	2.46 x 4.29 - 0.39 x 0.63 + 0.53 x 0.57 - 0.94 x 1.39 - 1.08 x 1.37			7.5	
		KOKKU KORTER NR. 10	41.9		65.1	
51	ELUTUBA	2.62 x 4.25	11.1		11.1	
52	— " —	3.27 x 3.85 + 0.30 x 0.62	12.8		12.8	
53	WC	0.82 x 1.16			1.0	
54	ESIK	1.87 x 2.60 + 0.35 x 0.44 - 0.14 x 0.72 - 0.06 x 0.58			4.9	
55	KÖÖK	1.86 x 2.72 - 0.35 x 0.62 + 0.30 x 0.76 - 0.81 x 1.22			4.1	
		KOKKU KORTER NR. 9	23.9		33.9	
56	KÖÖK	2.22 x 2.78 - 0.38 x 0.68 + 0.51 x 0.61 - 0.85 x 1.23			5.2	
57	ESIK	1.87 x 2.57 + 0.33 x 0.44 - 0.14 x 0.74 - 0.06 x 0.59 - +(1.17 + 0.98 x 0.32 : 2)			5.2	
58	WC	0.85 x 1.22			1.0	
59	ELUTUBA	3.23 x 3.85 + 0.32 x 0.71	12.7		12.7	
60	— " —	2.98 x 4.23	12.6		12.6	
		KOKKU KORTER NR. 8	25.3		36.7	
61	KÖÖK	(2.83 + 2.62 x 3.16 : 2) + 0.96 x 1.15 - 0.37 x 0.61 + + 0.50 x 0.55 - 0.93 x 1.37			8.5	
62	VANNITUBA	(1.79 + 1.70 x 2.49 : 2) - 0.30 x 0.35 - 0.45 x 0.45 - - (0.75 x 0.40 : 2) - 3.14 x 0.40 x 0.40 : 4			3.8	
63	KORIDOR	1.05 x 6.42 + 0.44 x 0.99 + 0.32 x 0.72 + 0.32 x 0.63			7.6	
64	WC	0.88 x 1.21			1.1	
65	ESIK	1.57 x 2.80			4.4	
66	ELUTUBA	2.79 x 3.56	9.9		9.9	
67	— " —	3.40 x 5.27	17.9		17.9	
68	— " —	3.16 + 2.77 x 5.26 : 2	15.6		15.6	
		KOKKU KORTER NR. 7	43.4		68.8	
		KOKKU 3. KORRUS	134.5		204.5	
69	ELUTUBA	2.80 x 3.59	10.1		10.1	
70	— " —	3.30 x 5.28	17.4		17.4	
71	— " —	2.73 x 5.29	14.4		14.4	
72	ESIK	1.58 x 2.80			4.4	
73	WC	0.88 x 1.20			1.1	
74	KORIDOR	1.07 x 5.80 + 0.44 x 0.90 + 0.32 x 0.62 x 2			7.0	
75	VANNITUBA	1.55 x 2.40 - 0.26 x 0.29 - 0.30 x 0.42 - (0.65 x 0.30 : 2) - - 3.14 x 0.40 x 0.40 : 4			3.0	

1	2	3	4	5	6	7
76	KÖÖK	$2.36 \times 4.27 - 0.39 \times 0.63 + 0.53 \times 0.57 - 0.94 \times 1.39 - 1.08 \times 1.37$			7.3	
		KOKKU KORTER NR. 14	41.9		64.7	
77	ELUTUBA	2.68×4.25	11.4		11.4	
78	— " —	$3.30 \times 3.88 + 0.32 \times 0.60$	13.0		13.0	
79	KÖÖK	$1.88 \times 2.80 - 0.35 \times 0.61 + 0.30 \times 0.75 - 0.83 \times 1.25$			4.2	
80	ESIK	$1.82 \times 2.57 + 0.30 \times 0.44 - 0.14 \times 0.74 - 0.06 \times 0.54$			4.9	
81	WC	0.82×1.16			1.0	
		KOKKU KORTER NR. 13	24.4		34.5	
82	KÖÖK	$2.22 \times 2.87 - 0.36 \times 0.65 + 0.50 \times 0.59 - 0.84 \times 1.24$			5.2	
83	ESIK	$1.87 \times 2.55 + (1.13 + 0.95 \times 0.26 : 2) + 0.35 \times 0.43 - 0.14 \times 0.74 - 0.07 \times 0.48$			5.1	
84	WC	0.83×1.21			1.0	
85	ELUTUBA	$3.25 \times 3.87 + 0.32 \times 0.72$	12.8		12.8	
86	— " —	2.96×4.23	12.5		12.5	
		KOKKU KORTER NR. 12	25.3		36.6	
87	KÖÖK	$(2.83 + 2.63 \times 3.27 : 2) + 0.98 \times 1.02 - 0.37 \times 0.60 + 0.49 \times 0.57 - 0.94 \times 1.40 - 0.12 \times 0.16$			8.6	
88	VANNITUBA	$(1.80 + 1.70 \times 2.37 : 2) - 0.30 \times 0.32 - 0.27 \times 0.46 - (0.75 \times 0.40 : 2) - 3.14 \times 0.40 \times 0.40 : 4$			4.2	
89	KORIDOR	$1.06 \times 6.39 + 0.44 \times 0.97 + 0.32 \times 0.72 + 0.32 \times 0.63$			7.6	
90	WC	0.88×1.20			1.1	
91	ESIK	1.57×2.80			4.4	
92	ELUTUBA	2.82×3.57	10.1		10.1	
93	— " —	3.38×5.25	17.7		17.7	
94	— " —	$3.18 + 2.77 \times 5.24 : 2$	15.6		15.6	
		KOKKU KORTER NR. 11	43.4		69.3	
		KOKKU 4. KORRUS	135.0		205.1	
		KOKKU ELUMAJA NR. 1.	464.5	74.5	781.7	
		ELUMAJA NR. 2				
95	ESIK	2.21×2.47			5.5	
96	WC	0.68×0.88			0.6	
97	KÖÖK	$2.20 \times 3.50 + 0.13 \times 0.27 - 0.43 \times 0.83 - 0.78 \times 1.01 - 0.70 \times 0.94$			5.9	
98	ELUTUBA	$2.49 \times 5.02 - 0.18 \times 0.59 - 0.22 \times 0.64$	12.3		12.3	
99	— " —	$3.24 \times 4.78 - 0.41 \times 0.67$	15.2		15.2	
		KOKKU KORTER NR. 16 JA 1. KORRUS	27.5		39.5	
100	KÖÖK	$2.39 \times 5.73 - 0.19 \times 1.98 - 0.42 \times 0.82 - 0.57 \times 1.02 - 0.79 \times 1.09$			11.5	
101	WC	0.76×0.96			0.8	
102	ELUTUBA	$2.09 \times 5.06 - 0.11 \times 0.85$	10.5		10.5	
103	— " —	$3.61 \times 4.87 - 0.07 \times 0.69 - 0.24 \times 0.75$	17.4		17.4	
		KOKKU KORTER NR. 17 JA 2. KORRUS	27.9		40.2	
		KOKKU ELUMAJA NR. 2.	55.4		79.7	

1	2	3	4	
		ELUMAJA NR.3		
104	ESIK	$(1.32 + 0.99 \times 0.70 : 2) + (1.32 + 1.23 \times 1.65 : 2)$		2.7
105	WC	$(0.66 + 0.77 : 2) \times (0.88 + 1.09 : 2)$		0.8
106	KÖÖK	$1.66 \times 2.35 - 0.62 \times 0.92$		4.0
107	ELUTUBA	$(3.80 + 3.87 : 2) \times (4.25 + 4.28 : 2) - 0.18 \times 0.98$ $- 3.14 \times 0.70 \times 0.70 : 4$	15.8	15.8
		KOKKU KORTER NR. 19	15.8	23.5
108	KÖÖK	$(2.32 + 2.22 : 2) \times (4.44 + 4.50 : 2) - 0.82 \times 1.08$ $- 0.63 \times 1.41$		8.4
109	WC	0.79×1.00		0.8
110	ELUTUBA	$(2.79 + 2.72 : 2) \times (4.65 + 4.69 : 2) - 0.49 \times 0.81 - 0.49 \times 0.70$	12.1	12.1
111	— " —	$(2.33 + 2.35 : 2) \times (4.63 + 4.66 : 2) - 0.15 \times 1.06 - 0.46 \times 0.77$	10.3	10.3
		KOKKU KORTER NR. 18	22.4	31.6
		KOKKU 1. KORRUS	38.2	55.1
112	ELUTUBA	$(2.75 + 3.34 : 2) \times (3.96 + 4.00 : 2) - 0.10 \times 0.70$ $- 3.14 \times 0.60 \times 0.60 : 4$	8.9	8.9
113	— " —	$(4.35 + 4.44 : 2) \times (4.97 + 5.03 : 2) - 3.14 \times 0.90 \times 0.90 : 4$	21.4	21.4
114	KÖÖK	$(2.62 + 2.68 : 2) \times (3.36 + 3.71 : 2) - (0.70 + 0.90 \times 1.10 : 2)$		8.5
115	ESIK	$1.61 \times 2.24 - 0.65 \times 0.94$		3.0
116	PANIPAIK	1.61×2.20		3.5
117	WC	0.60×0.88		0.5
		KOKKU KORTER NR. 21	30.3	45.8
118	KÖÖK	$(2.30 + 2.33 : 2) \times (3.00 + 3.07 : 2) - 0.18 \times 1.40 - 0.62 \times 1.16$		6.1
119	VANNITUBA-WC	$1.39 \times 2.30 + 0.18 \times 1.32 - 3.14 \times 0.40 \times 0.40 : 4$		3.3
120	ELUTUBA	$(2.56 + 2.66 : 2) \times (4.54 + 4.62 : 2) - 0.35 \times 0.84 - 0.32 \times 0.88$	11.4	11.4
121	— " —	$(2.57 + 2.59 : 2) \times (4.65 + 4.67 : 2) - 0.14 \times 1.14 - 0.37 \times 0.88$	11.5	11.5
		KOKKU KORTER NR. 20	22.9	32.3
		KOKKU 2. KORRUS	53.2	78.1
		KOKKU ELUMAJA NR.3.	91.4	133.2
		KÖIK KOKKU	611.3	74.5 994.6

MÄRKUS: RUUMIDE EKSPLIKATSIOON LISALEHEL

[Signature]
T. SINKA.

MAJAVALDUSE LOODUSES ÜLESMÕÖTNUD
JA PLAANI VALMISTANUD:

21. 03. 1948.

INS. INVENTARISEERIJAD

† SOOBIK †

V. Soobik

† REITSNIK †

E. Reitsnik

KONTROLLINUD:

F. Lepp

25. 03. 1948.

INS. INVENTARISEERUA

† LEPP †